

pro clima

ASSORTMENT AND PRICES



Valid from 1 February 2019 onwards, all previous price lists are no longer valid



The pro clima mini-max principle

Maximum effect with just 7 products

The pro clima core system consists of just these seven products. With these products, you will have a reliable solution available to you for almost all your construction needs. And if you have to contend with special requirements, you can always make use of pro clima's full range.

Airtight membrane
INTELLO PLUS



page 4

Joint adhesive
ORCON



page 16/17

Adhesive tape
TESCON VANA

100 YEARS ADHESION

- ✓ successfully tested
- ✓ unique worldwide

www.proclima.com/100years



page 17

Joint adhesive tape
TESCON PROTECT



page 19



Roofing felt
SOLITEX MENTO 3000

page 10



Nail sealing tape
TESCON NAIDECK

page 22



Primer
TESCON PRIMER

Tested for harmful substances in accordance with



Based on the criteria of the Committee for Health-Related Evaluation of Construction Products at the German Federal Environment Agency

page 29

INTELLO® Hydrosafe high-performance vapour retarder, suitable for all fibrous insulation mats and boards

APPLICATION: For use as a vapour retarder and airtightness Membrane in roofs, pitched roofs, walls, ceilings, and floors. Suitable for use in combination with all fibrous insulation mats and boards.

ID Code	GTIN	Roll length	Roll width	Roll area	Roll weight	UE	UE / Pal.	EUR / m ²	EUR / Roll
10091	4026639011176	20 m	1.50 m	30 m ²	3 kg	1	42	2.72	81.60
10090	4026639011190	50 m	1.50 m	75 m ²	7 kg	1	20	2.61	195.75
10077	4026639011985	50 m	3.00 m	150 m ²	14 kg	1	20	2.61	391.50
12221	4026639122216	50 m	3.00 m*	150 m ²	14 kg	1	20	2.77	415.50

*folded to 1.60 m

ADVANTAGES:

The best possible protection for insulation structures thanks to humidity-variable diffusion adaptation with a variation of a factor of over 100; Test winner in April 2012 with the German product-testing foundation »Stiftung Warentest«; permanent protection: Officially tested and certified performance; protected winter building sites thanks to hydrosafe behaviour; excellent values in the hazardous substance test, has been tested according to the ISO 16000 evaluation scheme

SYSTEMPRODUCTS:

Adhesive tape: TESCON VANA
Joint adhesive: ORCON F; ORCON MULTIBOND
Cables / pipes: KAFLEX; ROFLEX

DIBt approval for humidity-variable airtight membranes INTELLO



INTELLO® PLUS Reinforced hydrosafe high-performance vapour retarder, suitable for all fibrous insulation materials

APPLICATION: For use as a vapour retarder and airtightness Membrane in roofs, pitched roofs, walls, ceilings, and floors. Suitable for use in combination with all fibrous insulation.

ID Code	GTIN	Roll length	Roll width	Roll area	Roll weight	UE	UE / Pal.	EUR / m ²	EUR / Roll
10093	4026639011237	20 m	1.50 m	30 m ²	4 kg	1	42	2.88	86.40
10092	4026639011244	50 m	1.50 m	75 m ²	9 kg	1	20	2.77	207.75
10076	4026639011992	50 m	3.00 m	150 m ²	18 kg	1	20	2.77	415.50
12222	4026639122223	50 m	3.00 m*	150 m ²	18 kg	1	20	2.94	441.00

*folded to 1.60 m

ADVANTAGES:

The best possible protection for insulation structures thanks to humidity-variable diffusion adaptation with a variation of a factor of over 100; Test winner in April 2012 with the German product-testing foundation »Stiftung Warentest«; permanent protection: Officially tested and certified performance; protected winter building sites thanks to hydrosafe behaviour; very low coefficient of expansion when combined with spray insulation materials; excellent values in the hazardous substance test, has been tested according to the ISO 16000 evaluation scheme

SYSTEMPRODUCTS:

Adhesive tape: TESCON VANA
Joint adhesive: ORCON F; ORCON MULTIBOND
Cables / pipes: KAFLEX; ROFLEX

DIBt approval for humidity-variable airtight membranes INTELLO PLUS



DB+ Hydrosafe reinforced vapour retarder and airtightness Membrane made of building paper, humidity-variable

APPLICATION: For use as a vapour retarder and airtightness Membrane in roofs, walls, ceilings, and floors. Suitable for structures with fibrous insulation.

ID Code	GTIN	Roll length	Roll width	Roll area	Roll weight	UE	UE / Pal.	EUR / m ²	EUR / Roll
10081	4026639011039	100 m	0.75 m	75 m ²	14 kg	1	24	2.05	153.75
10082	4026639011046	100 m	0.90 m	90 m ²	17 kg	1	24	2.05	184.50
10083	4026639011053	100 m	1.05 m	105 m ²	20 kg	1	24	2.05	215.25
10084	4026639011114	50 m	1.05 m	52,5 m ²	10 kg	1	42	2.05	107.63
10085	4026639011060	100 m	1.35 m	135 m ²	25 kg	1	24	2.05	276.75
10086	4026639011121	50 m	1.35 m	67,5 m ²	13 kg	1	42	2.05	138.38
10087	4026639011343	50 m	1.70 m	85 m ²	16 kg	1	42	2.05	174.25
10088	4026639011077	50 m	2.75 m	137,5 m ²	26 kg	1	20	2.05	281.88

ADVANTAGES:

High protection against structural damage and mould, as a result of its moisture-variable diffusion resistance; for construction in accordance with standards and laws, thanks to approval by the German DIBt; permanent protection: Officially tested and certified performance; protected winter building sites thanks to hydrosafe behaviour; suitable for all fibrous thermal insulation (also blown-in insulation); Ecological solution for sealing the building shell

SYSTEMPRODUCTS:

Adhesive tape: UNI TAPE
Joint adhesive: ECO COLL; ORCON MULTIBOND
Cables / pipes: KAFLEX; ROFLEX

TECHNICAL SPECS:

Sheet	Building paper, glued with PE
Reinforcement	Fiberglass mesh
Thickness	0,23 ±0,1 mm
s _d -value humidity variable	2,3 ±0,25 m / 0,40 – 4 m
g-value humidity variable	11,5 ±1,25 MN-s/g / 2 – 20 MN-s/g
Surface weight	190 ±10 g/m ²
Temperature resistance	permanent up to +40 °C
Tensile strength MD/CD	550 N/5 cm / 420 N/5 cm

Carries the CE mark in accordance with EN 13984.



DIBt approval for humidity-variable airtight membranes DB+



INTESANA® / INTESANA® connect

Hydrosafe high-performance vapour check for above-rafter insulation with a humidity-variable g-value

APPLICATION: Can be used as a weather resistant, humidity-variable vapour check and airtightness Membrane on sarking boards under insulation above the rafters.

Product	ID Code	GTIN	Roll length	Roll width	Roll area	Roll weight	UE	UE / Pal.	EUR / m ²	EUR / Roll
INTESANA	11779	4026639117793	50 m	1.50 m	75 m ²	12 kg	1	20	2.88	216.00
INTESANA connect	12220	4026639122209	50 m	1.50 m	75 m ²	12 kg	1	20	3.15	236.25

ADVANTAGES:

Ideal protection against structural damage and mould, as a result of its moisture-variable diffusion resistance; protects buildings against the elements during the construction phase from a roof pitch of 10°; protected winter building sites thanks to hydrosafe behaviour; Water-resistant and waterproof, can be walked on; excellent values in the hazardous substance test, has been tested according to the ISO 16000 evaluation scheme

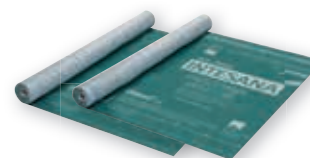
SYSTEMPRODUCTS:

Adhesive tape: UNI TAPE
Joint adhesive: ORCON F; ORCON MULTIBOND
Cables / pipes: KAFLEX; ROFLEX

TECHNICAL SPECS:

Fleece	Polypropylen
Membrane	Polyethylen-Copolymer
Thickness	0,45 ±0,05 mm
s _d -value humidity variable	7,5 ±0,25 m / 0,25 – >25 m
g-value humidity variable	37,5 ±1,25 MN-s/g / 1,25 – >125 MN-s/g
Surface weight	150 ±5 g/m ²
Temperature resistance	permanent –40 °C to +80 °C
Tensile strength MD/CD	250 N/5 cm / 170 N/5 cm

Carries the CE mark in accordance with DIN EN 13984.



DA/DA connect

Vapour check and airtightness membrane for above-rafter insulation

APPLICATION: For use as a vapour retarder and airtightness membrane on boarding, for example, under insulation above the rafters.

Product	ID Code	GTIN	Roll length	Roll width	Roll area	Roll weight	UE	UE / Pal.	EUR/m ²	EUR/Roll
DA	10098	4026639011947	50 m	1,50 m	75 m ²	10 kg	1	20	1.96	147.00
DA NEW	1AR01687	4026639216878	50 m	3,00 m	150 m ²	20 kg	1	20	1.96	294.00
DA connect	10099	4026639011336	50 m	1,50 m	75 m ²	10 kg	1	20	2.34	175.50

ADVANTAGES:

Protects the structure against the elements during the construction phase; Water-resistant and waterproof, can be walked on; acts as a vapour retarder and air-proofing layer simultaneously; excellent values in the hazardous substance test, has been tested according to the ISO 16000 evaluation scheme

SYSTEMPRODUCTS:

Adhesive tape: TESCON VANA; DUPLEX
Joint adhesive: ORCON F; ORCON MULTIBOND
Cables / pipes: KAFLEX; ROFLEX, WILLFIX

TECHNICAL SPECS:

Protective and covering fleece	Polypropylen
Membrane	Polypropylen
Thickness	0,45 ±0,05 mm
s _a -value / g-value	2,3 ±0,25 m / 11,5 ±1,25 MN-s/g
Surface weight	130 ±5 g/m ²
Temperature resistance	permanent -40 °C to +100 °C
Tensile strength MD/CD	230 N/5 cm / 200 N/5 cm

Carries the CE mark in accordance with EN 13984.



07
EN 13984

DASATOP®

Humidity-variable refurbishment vapour check

APPLICATION: According to DIN 4108 suitable as sub-and-top vapour check and airtightness membrane for all structures with diffusion-permeable sarking membrane or roof lining membrane (e.g. pro clima SOLITEX). The g-value of the roof underlay on sarking boards must not exceed 0.5 MNs/g. Also suitable for use in combination with softwood fibreboard and MDF sub-roof panels as well as diffusion-permeable roof insulation systems.

ID Code	GTIN	Roll length	Roll width	Roll area	Roll weight	UE	UE / Pal.	EUR/m ²	EUR/Roll
10094	4026639011206	50 m	1,50 m	75 m ²	7 kg	1	20	2.12	159.00
10723	4026639011978	50 m	3,00 m	150 m ²	14 kg	1	20	2.12	318.00

ADVANTAGES:

Best possible reliability thanks to sub-and-top installation; protects building components: humidity-variable s_a value allows for installation in spaces between rafters and across rafters; time-saving installation: no adhesion to rafters required; easy to work with: particularly robust thanks to fleece reinforcement; excellent values in the hazardous substance test, has been tested according to the ISO 16000 evaluation scheme

SYSTEMPRODUCTS:

Adhesive tape: TESCON VANA
Joint adhesive: ORCON F; ORCON MULTIBOND
Cables / pipes: KAFLEX; ROFLEX

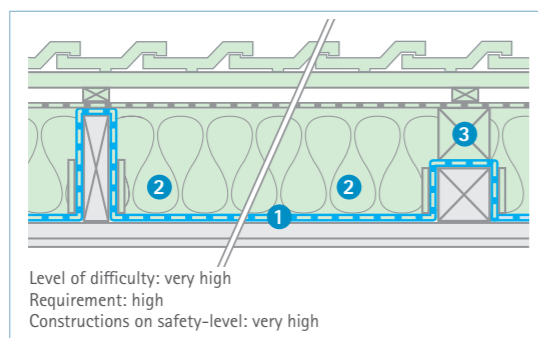
TECHNICAL SPECS:

Protective and covering fleece	Polypropylen
Membrane	Polyethylen-Copolymer
Thickness	0,25 ±0,05 mm
s _a -value humidity variable	1,6 ±0,25 m / 0,05-2 m
g-value humidity variable	8 ±1,25 MN-s/g / 0,25 - 10 MN-s/g
Surface weight	90 ±5 g/m ²
Temperature resistance	permanent -40 °C to +80 °C
Tensile strength MD/CD	195 N/5 cm / 105 N/5 cm

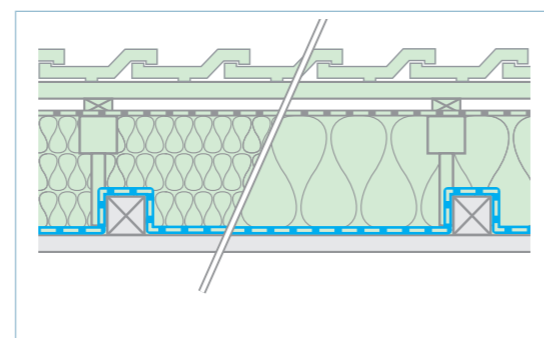
Carries the CE mark in accordance with EN 13984.



07
EN 13984



Level of difficulty: very high
Requirement: high
Constructions on safety-level: very high



External installation of vapour retarder for sub-and-top

- 1 DASATOP airtight membrane
- 2 Securing of positioning with DASATOP FIX
- 3 Doubling

DASAPLANO 0,01 connect

Airtightness membrane for exterior roof refurbishment between two layers of insulation material

APPLICATION: 3-ply airtightness Membrane for external roof renovation when fullyinsulating the existing rafters. Lay over the rafters underneath an additional rafter insulation made out of soft wood fibre sarking boards as part of pro clima's 2:1 and 3:1 renovation solution and for the approved renovation solutions of soft wood fibre board manufacturers.

ID Code	GTIN	Roll length	Roll width	Roll area	Roll weight	UE	UE / Pal.	EUR/m ²	EUR/Roll
14086	4026639140869	50 m	1,50 m	75 m ²	12 kg	1	20	2.44	183.00

ADVANTAGES:

Simple creation of the airtight layer: installation across rafters and insulation; dry and reliable building components thanks to active moisture transport; protection during the construction phase: suitable as a temporary covering; quick and reliable adhesion thanks to the integrated 'connect' self-adhesive zones along the membrane strips; excellent values in the hazardous substance test, has been tested according to the ISO 16000

SYSTEMPRODUCTS:

Adhesive tape: TESCON VANA; DUPLEX
Joint adhesive: ORCON F; ORCON MULTIBOND
Cables / pipes: KAFLEX; ROFLEX

TECHNICAL SPECS:

Protective and covering fleece	Polypropylene microfibre fleece
Membrane	monolithic polymer mixture
Thickness	0,50 ±0,05 mm
s _a -value humidity variable	0,06 ±0,02 m / 0,01 m humidity variable
g-value humidity variable	0,3 ±0,1 MN-s/g / 0,05 MN-s/g humidity variable
Surface weight:	145 ±5 g/m ²
Temperature resistance	permanent -40 °C to +100 °C
Tensile strength MD/CD	270 N/5 cm / 200 N/5 cm

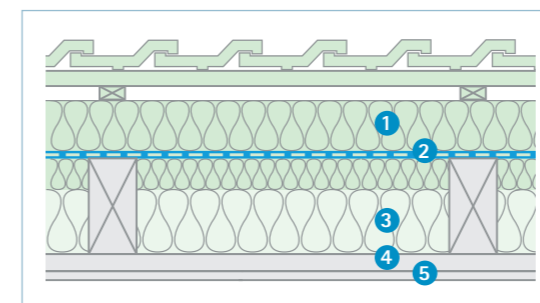
Carries the CE mark in accordance with EN 13984.



Insulation covering with wood fibre underlay panels

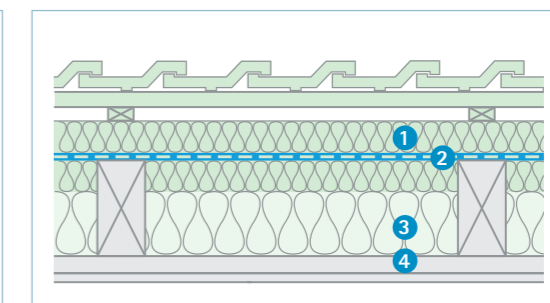


12
EN 13984



2:1 solution

- 1 Over-rafter insulation, wood fibre underlay panel
- 2 DASAPLANO 0,01 connect
- 3 Fibrous insulation material
- 4 Laths
- 5 Inner cladding: gypsum plasterboard or plaster on wood-wool boards



3:1 solution

- 1 Over-rafter insulation, wood fibre underlay panel
- 2 DASAPLANO 0,01 connect
- 3 Fibrous insulation material
- 4 Inner cladding: wooden boards or plaster on batten cladding



Insulation covering with mineral fibre, cellulose fibre, hemp, flax ...



12
EN 13984

DASAPLANO 0,50 connect

Airtightness membrane for exterior roof refurbishment between two layers of insulation material

APPLICATION: 3-ply airtightness membrane for roof restoration from the outside in the case of full insulation of the existing spaces between the rafters. Lay over the rafters underneath an additional rafter insulation made out of mineral wool, flexible wood and cellulose fibre boards or hemp insulating boards.

ID Code	GTIN	Roll length	Roll width	Roll area	Roll weight	UE	UE / Pal.	EUR/m ²	EUR/Roll
14084	4026639140845	50 m	1.50 m	75 m ²	9 kg	1	30	2.91	218.25

ADVANTAGES:

Simple creation of the airtight layer: installation across rafters and insulation; dry and reliable building components thanks to adapted diffusion resistance; quick and reliable adhesion thanks to the integrated 'connect' self-adhesive zones along the membrane strips; excellent values in the hazardous substance test, has been tested according to the ISO 16000

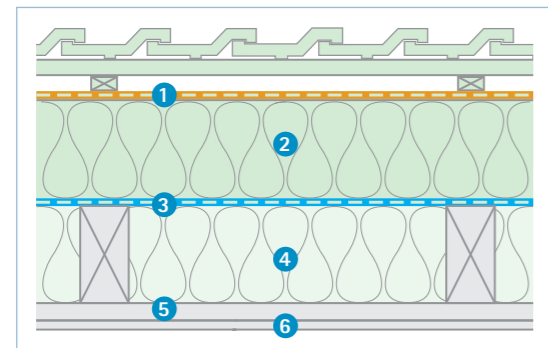
SYSTEMPRODUCTS:

Adhesive tape: TESCON VANA; DUPLEX
Joint adhesive: ORCON F; ORCON MULTIBOND
Cables / pipes: KAFLEX; ROFLEX

TECHNICAL SPECS:

Protective and covering fleece	Polypropylene microfibre
Membrane	Monolithic polymer mixture
Thickness	0,40 ±0,05 mm
s _d -value / g-value	0,50 ±0,10 m / 2.5 ±0.50 MN-s/g
Surface weight	115 ±5 g/m ²
Temperature resistance	permanent -40 °C to 100 °C ; -40 °F to 212 °F
Tensile strength MD/CD	225 N/5 cm / 150 N/5 cm

Carries the CE mark in accordance with EN 13984.



1:1 solution

- Underlay membrane s_d value ≤ 0.05 m (e.g. SOLITEX family)
- Mat-shaped over-rafter insulation, e.g. wood or cellulose fibre, hemp or mineral wool
- DASAPLANO 0,50 connect
- Fibrous compartment insulation
- Laths
- Inner cladding

SANTA DT / SANTA UT

Refurbishment wallpaper

APPLICATION: Creation of the necessary vapour check layer in existing roof structures which are insulated after construction using injected/blown insulation. They can be combined with both diffusion-permeable sub-roof covers as well as with diffusion-resistant seals.

Product	ID Code	GTIN	Roll length	Roll width	Roll area	Roll weight	UE	UE / Pal.	EUR/m ²	EUR/Roll
SANTA DT	10096	4026639011954	15 m	0.53 m	7.95 m ²	2 kg	6	33	2.67	21.23
SANTA UT	10097	4026639011183	15 m	0.53 m	7.95 m ²	1.8 kg	6	33	2.67	21.23

ADVANTAGES:

Quick and cost-effective increasing of the diffusion resistance on the inside; protection against structural damage and mould; for roofs, roof slopes, walls and ceilings; woodchip appearance: simply paint over (SANTA DT); smooth roll area: simply paint or wallpaper over (SANTA UT); excellent values in the hazardous substance test, has been tested according to the ISO 16000

ADHESIVE RECOMMENDATION:

e.g. Metylan Ovalit VB/Henkel

TECHNICAL SPECS:

Top layer DT	Smooth wallpaper fleece
Top layer UT	Multi-layer woodchip (coarse)
Membrane	Polyethylene copolymer
Cover-fleece	wallpaper fleece
Thickness	0,40 mm
s _d -value / g-value	2.3 m humidity variable / 11.5 MNs/g - humidity variable
Surface weight	SANTA UT: 203 g/m ² SANTA DT: 248 g/m ²
Temperature resistance	permanent to +40 °C

RB Dust protection membrane

APPLICATION: For use as dust and trickle protection for rooms under suspended ceilings with loose fill insulation and in floors.

ID Code	GTIN	Roll length	Roll width	Roll area	Roll weight	UE	UE / Pal.	EUR/m ²	EUR/Roll
10100	4026639011961	50 m	1.50 m	75 m ²	4 kg	1	35	0.81	60.75

ADVANTAGES:

Easy to work with: robust PP fleece; can be used flexibly: for dry and slightly moist fillings; reliable protection against dust thanks to particularly close interweaving; for reliable building components: particularly diffusion-open

SYSTEMPRODUCTS:

Adhesive tape: TESCON VANA; DUPLEX
Joint adhesive: ORCON F; ORCON MULTIBOND

TECHNICAL SPECS:

Fleece	3-layer Polypropylene
Thickness	0,1 mm
s _d -value / g-value	0,03 m / 0.15 MN-s/g
Surface weight	45 g/m ²
Temperature resistance	permanent -40 °C to +100 °C

DA-S Vapour check strips

APPLICATION: INTESANA strips for bonding joints, for example, between floor joints and concrete surfaces, between wood-based panels or as strips of repair tape for taping over leaks in roofs, pitched roofs, walls, ceilings and floors.

ID Code	GTIN	Roll length	Roll width	Roll area	Roll weight	UE	UE / Pal.	EUR/m	EUR/Roll
10103	4026639011213	100 m	21 cm	21 m ²	3 kg	2	28	0.50	50.00

ADVANTAGES:

Pre-assembled vapour retarder and airtightness strips for rapid installation; for airtight bonds according to DIN 4108-7, SIA 180 and OENORM B 8110-2; Polyethylene copolymer membrane and extra strong polypropylene protective fleece; Moisture-variable diffusion resistance

TECHNICAL SPECS:

Polypropylene fleece with membrane made of polyethylene copolymer	
s _d -value / humidity variable	7.50 ±0.25 m / 0.25 - >25 m

SYSTEMPRODUCTS:

Adhesive tape: TESCON VANA; DUPLEX
Joint adhesive: ORCON F; ORCON MULTIBOND



Vapour-retarding, not airtight

SOLITEX MENTO®-Family 3 or 4 layer roof underlays

APPLICATION: Three or four layer roof underlays permeable roof lining and sarking membrane which is suitable for laying on boarding, MDF and fibreboard roof lining panels and insulating mats and boards.



Also available in **connect**-technology with two integrated self-adhesive zones

SOLITEX MENTO 1000 (connect)
3-ply sarking and roof lining membrane, light sheeting with monolithic TEEE functional membrane, with 2 integrated self-adhesive sections

SOLITEX MENTO 3000 (connect)
3-ply sarking and roof lining membrane, very high wear-resistance, high resistance to driving rain, very high thermal stability

SOLITEX MENTO 5000 (connect)
3-ply underlay and sarking membrane, extra heavy, 6 months of outdoor exposure



Also available in **connect**-technology with two integrated self-adhesive zones

SOLITEX MENTO PLUS (connect)
4-ply reinforced sarking and roof lining membrane for blowing-in insulation, with 2 integrated self-adhesive sections

SOLITEX MENTO ULTRA (connect)
Reinforced, 4-ply underlay and sarking membrane with particularly high tear-resistance for use underneath large-sized roof tiles, with 2 integrated self-adhesive sections



11
EN 13859-1

Product	ID Code	GTIN	Length	Width	Area	Weight	UE	UE/Pal.	EUR/m ²	EUR/Roll
SOLITEX MENTO 1000	11447	4026639114471	50 m	1.50 m	75 m ²	9 kg	1	30	1.74	130.50
SOLITEX MENTO 1000	12263	4026639122636	50 m	3.00 m	150 m ²	18 kg	1	30	1.74	261.00
SOLITEX MENTO 1000 connect	12219	4026639122193	50 m	1.50 m	75 m ²	9 kg	1	30	2.06	154.50
SOLITEX MENTO 3000	12900	4026639129000	50 m	1.50 m	75 m ²	11 kg	1	20	2.01	150.75
SOLITEX MENTO 3000	14354	4026639143549	50 m	3.00 m	150 m ²	22 kg	1	20	2.01	301.50
SOLITEX MENTO 3000 connect	12909	4026639129093	50 m	1.50 m	75 m ²	11 kg	1	20	2.33	174.75
SOLITEX MENTO 3000 connect	16321	4026639163219	50 m	3.00 m	150 m ²	22 kg	1	20	2.33	349.50
SOLITEX MENTO 5000	12903	4026639129031	50 m	1.50 m	75 m ²	16 kg	1	20	2.77	207.75
SOLITEX MENTO 5000	13759	4026639137593	50 m	3.00 m	150 m ²	34 kg	1	20	2.77	415.50
SOLITEX MENTO 5000 connect	12910	4026639129109	50 m	1.50 m	75 m ²	16 kg	1	20	3.09	231.75
SOLITEX MENTO PLUS	12905	4026639129055	50 m	1.50 m	75 m ²	13 kg	1	20	2.44	183.00
SOLITEX MENTO PLUS	13758	4026639137586	50 m	3.00 m	150 m ²	26 kg	1	20	2.44	366.00
SOLITEX MENTO PLUS connect	12911	4022639129116	50 m	1.50 m	75 m ²	13 kg	1	20	2.76	207.00
SOLITEX MENTO ULTRA	1AR00629	4026639206299	50 m	1.50 m	75 m ²	16.5 kg	1	20	3.22	241.50
SOLITEX MENTO ULTRA connect	1AR00630	4026639206305	50 m	1.50 m	75 m ²	16.5 kg	1	20	3.54	265.50

ADVANTAGES:

High wear-resistance microfibre fleece; very high resistance to driving rain; very high thermal stability; also available with two built-in self-adhesive zones in the connect technology; suitable for temporary roof coverings as specified in the ZVDH product data sheet; suitable as a provisional

SYSTEMPRODUCTS:

Adhesive tape: TESCON VANA
Joint adhesive: ORCON F; ORCON MULTIBOND
Cables / pipes: KAFLEX; ROFLEX

TECHNICAL SPECS:

	MENTO 1000	MENTO 3000	MENTO 5000	MENTO PLUS	MENTO ULTRA
Protective and covering fleece	Polypropylene microfibre				
Membrane	monolithic TEEE				
Reinforcement	-			Polypropylene non-woven fabric	
Attribute	Value				
Colour	anthracite	anthracite	anthracite	anthracite	anthracite
Surface weight	115 ±5 g/m ²	150 ±5 g/m ²	215 ±5 g/m ²	175 ±5 g/m ²	200 ±10 g/m ²
Temperature resistance	permanent -40 °C to +100 °C	permanent -40 °C to +120 °C	permanent -40 °C to +120 °C	permanent -40 °C to +100 °C	permanent -40 °C to +100 °C
s _p -value / g-value	0,05 ±0,02 m / 0,25 ±0,1 MN-s/g	0,05 ±0,02 m / 0,25 ±0,1 MN-s/g	0,05 ±0,02 m / 0,25 ±0,1 MN-s/g	0,05 ±0,02 m / 0,25 ±0,1 MN-s/g	0,15 ±0,03 m / 0,75 ±0,15 MN-s/g
Reaction to fire	E				
Water resistance un-aged*	W1 / W1				W1 / W1
Water column	10.000 mm	10.000 mm	10.000 mm	> 2.500 mm	> 2.500 mm
Exposure time	3 months	4 months	6 months	4 months	4 months
Sarking membrane/roof lining membrane ¹⁾	USB-A / UDB-B	USB-A / UDB-A	USB-A / UDB-A	USB-A / UDB-A	USB-A / UDB-A

1) Fulfills the requirements of the product data sheet of the Central Association of the German Roofing Trade (ZVDH) on underlay and sarking membranes as per Table 1. Suitable as a temporary covering. All membranes have the CE mark in accordance with the requirements of EN 13859-1

Fulfills the requirements of the product data sheets of the Central Association of the German Roofing Trade (ZVDH) on underlay membranes UDB-A and sarking membranes USB-A as per Table 1. Suitable as a temporary covering. Safe against fall-through in accordance with the requirements of the relevant German trade association (GS-BAU-20 (10/2003) "Principles for the testing and certification of the fall-through safety of underlay membranes"). CE mark in accordance with the requirements of EN 13859-1.

SOLITEX MENTO ULTRA fulfils the requirements of DIN 4426, Clause 5.2 "Devices to protect against falls on roofs"

SOLITEX WELDANO®

Permeable, homogeneously weldable roof lining membrane

APPLICATION: A 3-ply permeable, homogeneously weldable, rainproof/watertight roof lining. Suitable for installation on pressure-resistant substrates, e.g. wooden decking, wood-based panels and wood fibre underlay panels.

ID Code	GTIN	Roll length	Roll width	Roll area	Roll weight	UE	UE / Pal.	EUR/m ²	EUR/Roll
16336	4026639163363	50 m	1.50 m	75 m ²	24 kg	1	20	7.49	561.75
16337	4026639163370	25 m	3.00 m	75 m ²	24 kg	1	20	7.49	561.75
1AR0082	4026639200822	400 m	1.50 m	600 m ²	192 kg	1	1	7.49	4494.00

ADVANTAGES:

Homogeneously weldable; non-slip and abrasion-resistant surface; permeable and, at the same time, rainproof against driving rain; extremely high tear-resistance; as a roof lining with the most stringent safety requirements; monolithic membrane

SYSTEMPRODUCTS:

SOLITEX WELDANO-S; WELDANO TURGA; Bottle with brush; ROLLFIX; WELDANO INCAV; WELDANO INVEX; WELDANO ROFLEX; WELDANO ROFLEX PLUS

TECHNICAL SPECS:

Membrane, both sides	Polyurethane
Substructure fleece	Polyester
Thickness	0,8 ±0,05 mm
s _a -value / g-value	0,18 ±0,04 m / 0.9 ±0.2 MN-s/g
Reaction to fire	E
Exposure time	3 months
Water resistance	W1
Water column	> 4 000 mm
Surface weight	310 ±15 g/m ²
Temperature resistance	permanent -40 °C to +80 °C
Tensile strength MD/CD	320 ±20 N/5 cm / 400 ±20 N/5 cm

Carries the CE mark in accordance with EN 13859-1.

SOLITEX WELDANO®-S

Permeable, homogeneously weldable roof lining strips

APPLICATION: For reliable integration of counter battens into the SOLITEX WELDANO system.

ID Code	GTIN	Roll length	Roll width	Roll weight	UE	UE / Pal.	EUR/m	EUR/Roll
16340	4026639163400	25 m	37.5 cm	3 kg	1	100	4.12	103.00

ADVANTAGES:

Homogeneously weldable in the SOLITEX WELDANO system; also suitable for large counter battens; extremely high tear-resistance; permeable, airtight, rainproof and watertight; can be easily adapted for smaller dimensions using a knife or scissors

SYSTEMPRODUCTS:

SOLITEX WELDANO; WELDANO TURGA; bottle with brush; ROLLFIX; WELDANO INCAV; WELDANO INVEX; WELDANO ROFLEX; WELDANO ROFLEX PLUS

TECHNICAL SPECS:

Membrane, both sides	Polyurethan
Substructure fleece	Polyester
Thickness	0,8 ±0,05 mm
s _a -value / g-value	0,18 ±0,04 m / 0.9 ±0.2 MN-s/g
Reaction to fire	E
Exposure time	4 months
Water resistance	W1
Surface weight	310 ±15 g/m ²
Temperature resistance	permanent -40 °C to +80 °C
Tensile strength MD/CD	300 ±30 N/5 cm / 350 ±30 N/5 cm

Carries the CE mark in accordance with EN 13859-1.

SOLITEX WELDANO® Cutting and welding service

Saves valuable installation time on the building site: pro clima can carry out cutting and joining of membranes to one another for you.

We offer our cutting and welding service for a fixed price of 2.23 €/m² (plus the RSP of SOLITEX WELDANO and offcut waste).

ADVANTAGES:

Faster installation thanks to time savings on the building site; sheets that are cut, welded and delivered specifically for your project; reliable, uniform quality of work thanks to machine-welded seams; less dependency on building site conditions: no welding in the wet, faster protection against weathering; possible from 50 m² roll area upwards

Prices are valid from 1 February 2019 onwards. All previous price lists are no longer valid. Prices subject to VAT at the statutory rate. The prices quoted are non-binding. Our general terms of business, delivery and payment apply. Errors and omissions excepted.

SOLITEX® UM connect

Four-layer roofing underlay with 3D separation layer and butyl self-adhesive strip

APPLICATION: SOLITEX UM connect is suitable for ventilated or unventilated structures in combination with any type of roofing or façade materials such as titanium zinc, aluminium, stainless steel, galvanised steel, copper etc.. Spunbonded membranes increase the safety of the structure and are therefore recommended by leading metal roof manufacturers. The 8 mm thick 3D separation layer made of PP fabric underlay protects the roof covering from moisture build-up and provides sound insulation against the noise of rain or hail.

ID Code	GTIN	Roll length	Roll width	Roll area	Roll weight	UE	UE / Pal.	EUR/m ²	EUR/Roll
12739	4026639127396	25 m	1.50 m	37.5 m ²	15 kg	1	10	8.23	308.63

ADVANTAGES:

Highest possible durability and thermostability thanks to the TEEE membrane; reliable drying: highly permeable (s_a value = 0.05 m); protects against corrosion and ensures improved noise insulation thanks to a 3D release film; dry building components thanks to pore-free TEEE functional membrane that is resistant to driving rain; up to 3 months of outdoor exposure; quick and reliable adhesion thanks to the integrated 'connect' self-adhesive zones along the membrane strips

SYSTEMPRODUCTS:

Adhesive tape: TESCON VANA
Joint adhesive: ORCON F; ORCON MULTIBOND
Cables / pipes: KAFLEX; ROFLEX

TECHNICAL SPECS:

Protective and covering fleece	Polypropylene microfibre
Membrane	monolithic TEEE
Thickness	8 ±0,5 mm
s _a -value / g-value	0,05 ±0,02 m / 0.25 ±0.1 MN-s/g
Reaction to fire	E
Exposure time	3 months
Water resistance un-/aged*	W1
Water column	10.000 mm
Surface weight	420 ±10 g/m ²
Temperature resistance	permanent -40 °C to +100 °C
Tensile strength MD/CD	220 ±15 N/5 cm / 185 ±15 N/5 cm

Carries the CE mark in accordance with EN 13859-1.

SOLITEX® ADHERO

Full-surface self-adhesive airtightness and weathering-protection membrane

APPLICATION: SOLITEX ADHERO allows airtightness to be achieved - for example, on mineral substrates and wood-based products. At the same time, it provides protection against weathering to structures during the construction phase.

ID Code	GTIN	Roll length	Roll width	Roll area	Roll weight	UE	UE / Pal.	EUR/m ²	EUR/Roll
1AR01513	4026639215130	30 m	1,50 m	45 m ²	12 kg	1	24	6.99	314.55

ADVANTAGES:

Protects the structure: Diffusion-permeable and maximum protection against driving rain; keeps building components dry by means of a pore-free moisture-active functional membrane; easy and reliable installation thanks to its split release film; sticks immediately to substrates with sufficient load-bearing capacity; permanent protection thanks to the high resistance to ageing and heat of the TEEE membrane; 3 months of outdoor exposure

SYSTEMPRODUCTS:

Adhesive tape: TESCON VANA;
Joint adhesive: ORCON F; ORCON MULTIBOND;
PRIMER RP; SPRIMER;
Cables / pipes: ROFLEX

TECHNICAL SPECS:

Protective and covering fleece	Polypropylene microfibre
Membrane	monolithic TEEE
Thickness	0.70 ±0.05 mm
s _a -value / humidity variable	0.40 ±0.08 m / 0.25 - 0.8 m
g-value / humidity variable	2.0 ±0.4 MNs/g / 1.25 - 4 MN-s/g
Reaction to fire	E
Exposure time	3 months
Water resistance	W1
Water column	10.000 mm
Surface weight	240 ±5 g/m ²
Temperature resistance	permanent -40 °C to 100 °C
Tensile strength MD/CD	250 ±30 N/5 cm / 200 ±30 N/5 cm

Carries the CE mark in accordance with EN 13859-1/-2.



Customised products

Further information is available in the "SOLITEX WELDANO cutting and welding service" brochure, by calling +49 - 62 02 - 27 82.45 or by sending an e-mail to order@proclima.de



EN 13859-1



NEW



EN 13859-1/-2

SOLITEX FRONTA® WA / SOLITEX FRONTA® WA **connect**

Highly permeable 3-ply wall lining membrane with monolithic TEEE membrane, suitable for closed façades with 2 integrated self-adhesive sections

APPLICATION: For making walls externally windproof. Installation on boarding, wood-based panels and all insulation mats and boards.

Product	ID Code	GTIN	Length	Width	Area	Weight	UE	UE/Pal.	EUR/m ²	EUR/Roll
SOLITEX FRONTA WA	10132	4026639010612	50 m	1.50 m	75 m ²	7.5 kg	1	20	1.68	126.00
SOLITEX FRONTA WA	10133	4026639010605	50 m	3.00 m	150 m ²	15 kg	1	20	1.68	252.00
SOLITEX FRONTA WA connect	16318	4026639163189	50 m	1.50 m	75 m ²	7.5 kg	1	20	2.00	150.00

ADVANTAGES:

Strong, 3-ply structure for protecting the wall structure; protective function as a result of non-porous functional Membrane that actively manages moisture; high nail tear resistance; for use behind closed façades; 3 months of outdoor exposure; quick and reliable adhesion as a result of integrated connect self-adhesive zones along the length of the membrane

SYSTEMPRODUCTS:

Adhesive tape: TESCON VANA, DUPLEX
Joint adhesive: ORCON F; ORCON MULTIBOND
Cables / pipes: KAFLEX; ROFLEX

TECHNICAL SPECS:

Protective and covering fleece	Polypropylene microfibre
Membrane	monolithic TEEE
Thickness	0,45 ±0,05 mm
s _g -value / g-value	0,05 ±0,02 m / 0,25 ±0,1 MN-s/g
Reaction to fire	E
Exposure time	3 months
Water resistance un-/aged*	W1
Surface weight	100 ±5 g/m ²
Temperature resistance	permanent -40 °C bis +100 °C
Tensile strength MD/CD	210 ±20 N/5cm / 140 ±20 N/5cm

Carries the CE mark in accordance with EN 13859-2.



SOLITEX FRONTA® QUATTRO / SOLITEX FRONTA® QUATTRO **connect**

3-ply wall lining membrane with monolithic TEEE functional membrane, suitable for open jointed and closed façades, with 2 integrated self-adhesive sections

APPLICATION: SOLITEX FRONTA QUATTRO connect permanently protects the insulation from wind and rain. For use with closed and open façades (open jointed façades) in accordance with installation guidelines.

Product	ID Code	GTIN	Length	Width	Area	Weight	UE	UE/Pal.	EUR/m ²	EUR/Roll
SOLITEX FRONTA QUATTRO	12933	4026639129338	50 m	1.50 m	75 m ²	13.5 kg	1	20	3.20	240.00
SOLITEX FRONTA QUATTRO	13729	4026639137296	50 m	3.00 m	150 m ²	27 kg	1	20	3.20	480.00
SOLITEX FRONTA QUATTRO connect	15042	4026639150424	50 m	1.50 m	75 m ²	14.5 kg	1	20	3.52	264.00

ADVANTAGES:

Highly diffusion-permeable, but with maximum resistance to driving rain; optimum drying conditions for wall structures: non-porous TEEE functional membrane actively transports moisture outwards; black fleece and black print prevent the membrane showing through open jointed façades; maximum ageing resistance and thermal stability thanks to the TEEE Membrane 6 months of outdoor exposure; quick and reliable adhesion as a result of integrated connect self-adhesive zones along the length of the membrane

SYSTEMPRODUCTS:

Adhesive tape: TESCON VANA, DUPLEX
Joint adhesive: ORCON F; ORCON MULTIBOND
Cables / pipes: KAFLEX; ROFLEX

TECHNICAL SPECS:

Fleece	Polypropylene microfibre
Membrane	monolithic TEEE
Thickness	0,60 ±0,10 mm
s _g -value / g-value	0,05 ±0,02 m / 0,25 ±0,1 MN-s/g
Reaction to fire	E
Exposure time	6 months
Water resistance	W1
Surface weight	180 ±5 g/m ²
Temperature resistance	permanent -40 °C to +100 °C
Tensile strength MD/CD	290 ±20 N/5 cm / 220 ±20 N/5 cm

Carries the CE mark in accordance with EN 13859-2.



SOLITEX FRONTA® PENTA / SOLITEX FRONTA® PENTA **connect**

5-ply wall lining membrane with double-layer, monolithic TEEE membrane, with 2 integrated self-adhesive sections

APPLICATION: Permeable, 5-ply wall lining membrane with double-layer, monolithic TEEE membrane. For use behind closed and open façades (gap decking up to 50 mm (2") and 40% open total area).

Product	ID Code	GTIN	Length	Width	Area	Weight	UE	UE/Pal.	EUR/m ²	EUR/Roll
SOL. FR. PENTA	16350	4026639163509	50 m	1.50 m	75 m ²	23 kg	1	12	4.12	309.00
SOL. FR. PENTA	16435	4026639164353	25 m	3.00 m	75 m ²	23 kg	1	12	4.12	309.00
SOL. FR. PENTA connect	16434	4026639164346	50 m	1.50 m	75 m ²	23 kg	1	12	4.44	333.00

ADVANTAGES:

Five-ply structure with double-layer, monolithic TEEE membrane; optimal drying conditions for wall structures: the pore-free functional membrane actively transports moisture to the outside; permeable and, at the same time, highly rainproof against driving rain; black fleece with identification marking in the overlap area: not visible behind gap formwork; extremely high tear-resistance, windproof, rainproof and waterproof 6 months of natural weathering; quick and reliable adhesion as a result of integrated connect self-adhesive zones along the length of the membrane

SYSTEMPRODUCTS:

Adhesive tape: TESCON VANA, DUPLEX
Joint adhesive: ORCON F; ORCON MULTIBOND
Cables / pipes: KAFLEX; ROFLEX

TECHNICAL SPECS:

Fleece	Polypropylene microfibre
Membrane	monolithic TEEE
Surface weight	280 ±15 g/m ²
Thickness	1,1 ±0,2 mm
s _g -value / g-value	0,2 ±0,05 m / 1,0 ±0,25 MN-s/g
Reaction to fire	E
Exposure time	6 months
Water resistance	W1
Temperature resistance	permanent -40 °C to +100 °C
Tensile strength MD/CD	440 ±35 N/5 cm / 440 ±35 N/5 cm

Carries the CE mark in accordance with EN 13859-2.



SOLITEX FRONTA® HUMIDA 3-ply slightly diffusion-resistant wall lining membrane behind ventilated facing walls

APPLICATION: Use as a slightly diffusion-inhibiting wall lining membrane on soft wood fibre boards behind ventilated facing walls.

ID Code	GTIN	Roll length	Roll width	Roll area	Roll weight	UE	UE/Pal.	EUR/m ²	EUR/Roll
14006	4026639140067	50 m	1.50 m	75 m ²	9 kg	1	20	2.58	193.50
14069	4026639140692	50 m	3.00 m	150 m ²	18 kg	1	20	2.58	387.00

ADVANTAGES:

Adheres to the standard DIN 68800-2: for timber wall structures behind ventilated pre-wall shells; protects wall structures against moisture from the ventilation layer; protects the building component during the construction phase: very resistant to driving rain; 3 months of outdoor exposure

SYSTEMPRODUCTS:

Adhesive tape: TESCON VANA, DUPLEX
Joint adhesive: ORCON F; ORCON MULTIBOND
Cables / pipes: KAFLEX; ROFLEX

TECHNICAL SPECS:

Protective and covering fleece	Polypropylene microfibre
Membrane	monolithic polymer mixture
Thickness	0,40 ±0,05 mm
s _g -value / g-value	0,50 ±0,10 m / 2,5 ±0,5 MN-s/g
Reaction to fire	E
Exposure time	3 months
Water resistance	W1
Water column	10.000 mm
Surface weight	115 ±5 g/m ²
Temperature resistance	permanent -40 °C to +100 °C
Tensile strength MD/CD	245 ±15 N/5 cm / 170 ±15 N/5 cm

Carries the CE mark in accordance with EN 13859-2.



BONDING AGENTS

BONDING AGENTS

ORCON®E Multi-purpose joint adhesive glue

APPLICATION: Long-term, elastic, adhesive for interior and exterior use. For bonding all types of vapour retarders and vapour barriers e.g. pro clima INTELLO, PE, PA, PP and aluminium films and roof lining and façade membranes to adjoining structural components.

ID Code	GTIN	Item	Volume	Efficiency/Range	UE	UE / Pal.	EUR / Unit
10106	4026639016270	Cartridge	310 ml	5 mm Line ~ 15 m 8 mm Line ~ 6 m	20	60	7.04
10107	4026639016287	Foil tube	600 ml	5 mm Line ~ 30 m 8 mm Line ~ 12 m	12	60	10.45

ADVANTAGES:

Very high adhesion and quick drying. No pressure lath is required on load-bearing substrates; airtight bonds according to DIN 4108-7, SIA 180 and OENORM B 8110-2; very elastic, permanently flexible; penetrates deep into the substrate; can also be stored in the event of frost; excellent values in the hazardous substance test, has been tested according to the ISO 16000 evaluation scheme

TECHNICAL SPECS:

Material	Dispersion based on acrylic acid copolymers and ethanol. Free from plasticisers, halogens
Application temperature	-10 °C to +50 °C
Temperature resistance	permanent -40 °C to +80 °C
Storage	up to -20 °C, cool and dry

ORCON®CLASSIC Solvent-free all-round bonding adhesive

APPLICATION: Solvent-free all-round bonding adhesive for airtight joints bonding all types of vapour retarders and vapour barriers of all types in accordance with DIN 4108-7, SIA 180 and OENORM B 8110-2.

ID Code	GTIN	Item	Volume	Efficiency/Range	UE	UE / Palette	EUR / Unit
12769	4026639127693	Cartridge	310 ml	5 mm Line ~ 15 m 8 mm Line ~ 6 m	20	60	7.04
12770	4026639127709	Foil tube	600 ml	5 mm Line ~ 30 m 8 mm Line ~ 12 m	12	60	10.45

ADVANTAGES:

Very high adhesion with particularly fast drying. No pressure lath required on substrates with sufficient load-bearing capacity; airtight bonding in accordance with DIN 4108-7, SIA 180 and OENORM B 8110-2; extremely resilient, permanent elasticity; penetrates deep into the subsurface; solvent-free; excellent values in the hazardous substance test

TECHNICAL SPECS:

Material	Dispersion based on acrylic acid copolymers. Free from plasticisers, halogens
Application temperature	-10 °C to 50 °C ; 14 °F to 122 °F (adhesive temp. >0 °C; >32 °F)
Temperature resistance	permanent von -40 °C to +80 °C
Storage	up to -20 °C, cool and dry

ECO COLL Natural latex-glue

APPLICATION: Airtight bonding of vapour retarding and airtightness membranes made from building paper (e.g. pro clima DB+) to all joints without the need for a pressure lath (depending on requirement) or other attachments and one below the other.

ID Code	GTIN	Item	Volume	Efficiency/Range	UE	UE / Pal.	EUR / Unit
10104	4026639016201	Cartridge	310 ml	5 mm Line ~ 15 m 8 mm Line ~ 6 m	20	60	8.59
10105	4026639016034	Foil tube	600 ml	5 mm Line ~ 30 m 8 mm Line ~ 12 m	12	60	14.28

ADVANTAGES:

Airtightness adhesive based on natural raw materials high adhesion; no pressure lath is required on load-bearing substrates; airtight bonds according to DIN 4108-7, SIA 180 and OENORM B 8110-2; excellent values in the hazardous substance test, has been tested according to the ISO 16000 evaluation scheme

TECHNICAL SPECS:

Material	natural latex, tree gum, casein talcum powder, cellulose, water
Application temperature	above -10 °C ; 14 °F
Temperature resistance	permanent up to +40 °C ; +104 °F
Storage	protect from frost, cool and dry

ORCON®MULTIBOND

Rolls of joint adhesive for interior and exterior use

APPLICATION: Solvent-free, permanent, elastic, frost-resistant airtightness adhesive from the roll for bonding vapour retarders and vapour barriers according to DIN 4108-7, SIA 180 and OENORM B 8110-2. Filed for patent - for interior and exterior use.

ID Code	GTIN	Length	Width	Thickness	Weight	UE	UE / Pal.	EUR / m	EUR / Roll	
1AR00572	4026639205728	2 x 10 m	11 mm	3 mm	0.815 kg	6	150	1.90	19.00	
1AR00501	4026639205018	10 m	11 mm	3 mm	3.7 kg	12	Prof. unit*	150	1.75	17.50

*Professional unit, only supplied in complete packages

ADVANTAGES:

Joint adhesive for interior and exterior use; Application temperature above -15 °C (5 °F); quick, clean and secure application straight from a roll; no drying time necessary, extreme adhesive strength immediately, joint is immediately airtight; no pressure lath required on substrates with sufficient load-bearing capacity; waterproof SOLID adhesive with no plasticisers, solvents, emulgators or preservatives; excellent values in the hazardous substance test, has been tested according to the AgBB evaluation scheme

TECHNICAL SPECS:

Material	SOLID acrylate
Release film	silicone-coated PP film
Application temperature	from -15 °C ; 5 °F
Temperature resistance	permanent -40 °C to 100 °C ; -40 °F to 212 °F
Storage	horizontal, cool and dry, protect from direct sunlight

TESCON®Vana

All-round adhesive tape with fleece backing

APPLICATION: For the permanent airtight and secure adhesion of the overlaps of films and fleece membranes (vapour retarding and airtightness membranes, roof lining and façade membranes) and their joints. Also suitable for bonding butt joints between wood-based panels.

ID Code	GTIN	Length	Width	UE	UE / Pal.	EUR / m	EUR / Roll	
11248	4026639016706	30 m	6 cm	10	48	0.81	24.30	
11249	4026639016713	30 m	6 cm	20	Prof. unit*	24	0.73	21.90
11250	4026639016683	30 m	7.5 cm	4	96	1.02	30.60	
15076	4026639150769	30 m	10 cm	2	96	1.36	40.80	
11251	4026639016690	30 m	15 cm	2	96	2.03	60.90	
13491	4026639134912	30 m	20 cm	1	96	3.00	90.00	

*Professional unit, only supplied in complete packages

ADVANTAGES:

All-round adhesive tape for internal and external use, 6 months of outdoor exposure; easy to tear off by hand with the soft fleece backing; can be plastered over for airtight bonds according to DIN 4108-7, SIA 180 and OENORM B 8110-2; excellent values in the hazardous substance test, has been tested according to the ISO 16000 evaluation scheme

TECHNICAL SPECS:

Backing	special PP fleece
Adhesive	waterproof SOLID adhesive
Release film	siliconized paper
Temperature resistance	permanent -40 °C to 90 °C ; -40 °F to 194 °F
Application temperature	above -10 °C ; 14 °F
Exposure time	6 months

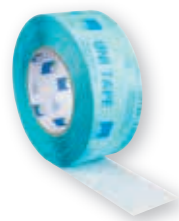


Can be plastered over

**100 YEARS
ADHESION**
✓ successfully tested
✓ unique worldwide

www.proclima.com/100years





UNI TAPE Universal adhesive tape

APPLICATION: For the permanent airtight and secure adhesion of the overlaps of vapour retarder and airtightness membrane and the indoor joints between such membranes. Also suitable for bonding butt joints between wood-based panels.

ID Code	GTIN	Length	Width	UE	UE / Pa.	EUR / m	EUR / Roll	
10655	4026639016539	30 m	6 cm	10	48	0.65	19.50	
10687	4026639016546	30 m	6 cm	20	Prof. unit*	24	0.59	17.70
10110	4026639016331	30 m	4 cm *	14	56	0.49	14.70	

* Professional unit, only supplied in complete packages

ADVANTAGES:

Can be used for any indoor application; for airtight bonds according to DIN 4108-7, SIA 180 and OENORM B 8110-2; high initial bond strength; tears off easily by hand; waterproof adhesive; excellent values in the hazardous substance test, has been tested according to the ISO 16000 evaluation scheme

* 4 cm UNI TAPE only for bonding to hard substrates (e.g. wood-based panels).

TECHNICAL SPECS:

Backing	special paper with reinforcement layer
Adhesive	waterproof SOLID adhesive
Release film	siliconized paper
Temperature resistance	permanent -40 °C to 90 °C ; -40 °F to 194 °F
Application temperature	above -10 °C ; 14 °F

**100 YEARS
ADHESION**

✓ successfully tested
✓ unique worldwide

www.proclima.com/100years



TESCON[®] No 1 All-round adhesive tape with backing made from perforated PE film

APPLICATION: For the permanent airtight and secure adhesion of the overlaps of films and fleece membranes (vapour retarding and airtightness membranes, roof lining and façade membranes) and their joints. Also suitable for bonding butt joints between wood-based panels.

ID Code	GTIN	Length	Width	UE	UE / Pa.	EUR / m	EUR / Roll	
10690	4026639016577	30 m	6 cm	10	48	0.81	24.30	
10684	4026639016584	30 m	6 cm	20	Prof. unit*	24	0.73	21.90

* Professional unit, only supplied in complete packages

ADVANTAGES:

All-round adhesive tape for indoors and outdoors, 3 months of outdoor exposure; flexible backing, easy to tear off by hand; very elastic and permanently deformable (no self-alignment), also ideal for connecting to penetrations; for airtight bonds according to DIN 4108-7, SIA 180 and OENORM B 8110-2; waterproof adhesive; excellent values in the hazardous substance test, has been tested according to the ISO 16000 evaluation scheme; can be plastered over

TECHNICAL SPECS:

Backing	perforated PE-foil
Adhesive	waterproof SOLID adhesive
Release film	siliconized paper
Temperature resistance	permanent -40 °C to 90 °C ; -40 °F to 194 °F
Application temperature	above -10 °C ; 14 °F
Exposure time	3 months

**100 YEARS
ADHESION**

✓ successfully tested
✓ unique worldwide

www.proclima.com/100years

TESCON[®] INVIS Black multi-purpose adhesive tape

APPLICATION: TESCON INVIS for invisible taped joints on and joints between wall lining membranes behind suspended façades and for the airtight sealing of vapour retarders or air-sealing layers internally and externally

ID Code	GTIN	Length	Width	UE	UE / Pa.	EUR / m	EUR / Roll	
11948	4026639119483	30 m	6 cm	10	48	0.81	24.30	
11949	4026639119490	30 m	6 cm	20	Prof. unit*	24	0.73	21.90

* Professional unit, only supplied in complete packages

ADVANTAGES:

All-round adhesive tape for internal and external use, 6 months of outdoor exposure; easy to tear off by hand with a soft fleece backing; suitable for sealing to penetrations; can be plastered over; also used for windtight adhesion of wall lining membranes behind suspended façades; waterproof adhesive

TECHNICAL SPECS:

Backing	special PP fleece
Adhesive	waterproof SOLID adhesive
Release film	siliconized paper
Temperature resistance	permanent -40 °C to 90 °C ; -40 °F to 194 °F
Application temperature	above -10 °C ; 14 °F
Exposure time	6 months



Can be plastered over

TESCON[®] PROTECT Pre-folded corner adhesive tape

APPLICATION: Pre-folded corner tap to stick vapour retarding and airproofing layers, roof lining, sarking and wall lining membranes and connections to adjacent structural elements.

ID Code	GTIN	Length	Width	UE	UE / Pa.	EUR / m	EUR / Roll	
14780	4026639147806	30 m	50 mm	5	60	1.53	45.90	
14779	4026639147790	30 m	50 mm	20	Prof. unit*	21	1.34	40.20
14777	4026639147776	30 m	60 mm	5	60	1.77	53.10	
14778	4026639147783	30 m	60 mm	20	Prof. unit*	21	1.54	46.20

* Professional unit, only supplied in complete packages

ADVANTAGES:

Simple, quick and clean corner sealing as a result of pre-folding; no release paper on the first adhesive side: stick down the tape immediately, no need to remove and dispose of the first backing strip; available in strip widths of 25/35 mm and 12/38 mm; soft fleece backing; moisture-resistant adhesive for permanently secure internal and external sealing; can be plastered over

TECHNICAL SPECS:

Backing	special PP fleece
Adhesive	special acrylate adhesive
Release film	silicone-coated PE film
Temperature resistance	permanent -40 °C to 90 °C ; -40 °F to 194 °F
Application temperature	above -10 °C ; 14 °F
Exposure time	3 months



Can be plastered over

TESCON[®] PROFIL

Corner adhesive tape with two separate removable release strips

APPLICATION: Sealing of window and door joints to vapour retarding, airtightness membranes and wood-based panels and externally for the connection of roof components to roof lining and wall lining membranes and to MDF boards.

ID Code	GTIN	Length	Width	UE	UE / Pal.	EUR / m	EUR / Roll
10121	4026639016263	30 m	6 cm	5	96	1.04	31.20
10807	4026639016645	30 m	6 cm	20	Prof. unit*	24	0.98 29.40

* Professional unit, only supplied in complete packages

ADVANTAGES:

Corner adhesive tape for internal and external use, 6 months of outdoor exposure; two individually removable strips of release paper; very elastic, soft and permanently deformable (no self-alignment), also ideal for connecting to penetrations; airtight bonds according to DIN 4108-7, SIA 180 and OENORM B 8110-2; excellent values in the hazardous substance test, has been tested according to the ISO 16000 evaluation scheme; can be plastered over

TECHNICAL SPECS:

Backing	special PP fleece
Adhesive	waterproof SOLID adhesive
Release film	split silicone coated PE-film approx. 12/48 mm
Temperature resistance	permanent -40 °C to 90 °C ; -40 °F to 194 °F
Application temperature	above -10 °C ; 14 °F
Exposure time	6 months

RAPID CELL

Rapid-application tape

APPLICATION: For economical and permanently airtight bonding of butt joints between wood-based panels as well as for bonding overlaps between vapour check and airtightness membrane and trickle protection membrane.

ID Code	GTIN	Length	Width	UE	UE / Pal.	EUR / m	EUR / Roll
10119	4026639016317	15 m	5 cm	12	56	0.63	9.45
10688	4026639016522	30 m	5 cm	24	Prof. unit*	24	0.57 17.10
10120	4026639016300	30 m	5 cm	12	56	0.63	18.90

* Professional unit, only supplied in complete packages

ADVANTAGES:

Time saving approx. 60%: no removal, picking up or disposal of backing paper; easy to work with: backing paper can be torn off by hand; ensures reliable building components thanks to waterproof SOLID adhesive; construction in adherence with standards: for airtight bonding in accordance with DIN 4108-7, SIA 180 and OENORM B 8110-2; excellent values in the hazardous substance test, has been tested according to the ISO 16000 evaluation scheme

TECHNICAL SPECS:

Backing	Silicone-coated kraft paper
Adhesive	waterproof SOLID adhesive
Release film	none
Temperature resistance	permanent -40 °C to 90 °C ; -40 °F to 194 °F
Application temperature	above -10 °C ; 14 °F

DUPLEX

Double-sided adhesive tape

APPLICATION: Used to bond roof sarking, roof lining and wall lining membrane and provides protection against humidity. Also suitable for attaching vapour retarders to metal sections.

ID Code	GTIN	Length	Width	UE	UE / Pal.	EUR / m	EUR / Roll
10123	4026639016591	5 x 20 m	2.5 cm	6	384	0.33	6.60
10686	4026639016218	80 m	2.5 cm	10	Prof. unit*	75	0.26 20.80

* Professional unit, only supplied in complete packages

ADVANTAGES:

Durable leak-proof bonding, indoors and out; secure bonding of membranes in the overlap area; for airtight bonds according to DIN 4108-7, SIA 180 and OENORM B 8110-2; using the DUPLEX hand dispenser (for 20 m rolls, see accessories), particularly easy to use. Unroll, press on and tear off in a single operation; excellent values in the hazardous substance test, has been tested according to the ISO 16000 evaluation scheme

TECHNICAL SPECS:

Adhesive	special acrylate adhesive
Reinforcement	Plastic
Release film	silicone-coated PE film
Temperature resistance	permanent -40 °C to 90 °C ; -40 °F to 194 °F
Application temperature	above -10 °C ; 14 °F

TESCON[®] CROSSEAL

Joint adhesive tape with three independent adhesive strips for CLT walls

APPLICATION: Joint adhesive tape with three independent adhesive strips for airtight bonding of ground and ceiling slabs to CLT and timber post-and-beam structures.

ID Code	GTIN	Length	Width	UE	UE / Pal.	EUR / m	EUR / Roll
16432	4026639164322	30 m	140 mm	1	150	3.89	116.70

ADVANTAGES:

Single working step for airtight joint bonding and sealing of longitudinal joints that are necessary due to the structural design; Preparation and installation made easier thanks to the third independent adhesive strip; permanently secure airtight bonding; 90 mm long independent adhesive strip bridges any unevenness between the ground sill and concrete slab; 6 months of outdoor weathering

TECHNICAL SPECS:

Backing	special PP fleece
Adhesive	waterproof SOLID adhesive
Release film	silicone-coated PE film
Temperature resistance	permanent -40 °C to 90 °C ; -40 °F to 194 °F
Application temperature	above -10 °C ; 14 °F
Exposure time	6 months

EXTOSEAL[®] ENCORS

Water bearing adhesive sealing tape with high adhesion strength

APPLICATION: Watertight adhesive tape with high adhesion for creating self sealing sill flashing, for joining wood-based panels to smooth mineral surfaces, to stick sub-roof panels one below the other (e.g. in grooves and transitions) and to bond these to adjoining structural elements.

ID Code	GTIN	Length	Width	UE	UE / Pal.	EUR / m	EUR / Roll
15361	4026639153616	20 m	10 cm	3	60	3.57	71.40
14134	4026639141347	20 m	15 cm	2	60	5.28	105.60
14135	4026639141354	20 m	20 cm	2	42	7.14	142.80
14732	4026639147325	20 m	30 cm	1	60	10.71	214.20

ADVANTAGES:

Protects structural elements from water ingress: watertight and blocks rising damp; extremely high adhesion even to slightly damp and cold surfaces; very elastic: can adapt flexibly to subsurfaces and corners; bonds to mineral substrates; seals nail holes; excellent values in the hazardous substance test, has been tested according to the ISO 16000 evaluation scheme

TECHNICAL SPECS:

Backing	elastic PE carrier film
Material	Butyl rubber modified with acrylate
Release film	silicone-coated PE film
Surface weight	approx. 1.9 kg/m ²
Thickness	approx. 1.1 mm
Resistance to driving rain	up to 600 Pa, self sealing sill flashing
Application temperature	-10 °C to 35 °C ; 14 °F to 95 °F
Temperature resistance	permanent -40 °C to 80 °C ; -40 °F to 176 °F

EXTOSEAL[®] FINOC Moisture adhesive sealing tape

APPLICATION: Moisture-tight barrier tape to seal under sills in timber structures, for joining wood-based panels to smooth mineral surfaces, to stick sub-roof panels one below the other (e.g. in grooves and transitions) and to bond these to adjoining structural elements.

ID Code	GTIN	Length	Width	UE	UE / Pal.	EUR / m	EUR / Roll
15363	4026639153630	20 m	10 cm	3	60	2.02	40.40
14136	4026639141361	20 m	15 cm	2	60	2.95	59.00
14137	4026639141378	20 m	20 cm	2	42	4.09	81.80
14698	4026639146984	20 m	30 cm	1	60	6.16	123.20

ADVANTAGES:

Protects structural elements from water ingress: water-tight and blocks rising damp; creates a secure bond: butyl rubber penetrates deep into the substrate; very elastic carrier foil with particularly low restoring forces: it can be flexibly adapted to surfaces and corners; bonds to mineral substrates; airtight bonds according to DIN 4108-7, SIA 180 and OENORM B 8110-2; excellent values in the hazardous substance test, has been tested according to the ISO 16000 evaluation scheme

TECHNICAL SPECS:

Backing	elastic PE carrier film
Material	Butyl rubber
Release film	silicone-coated PE film
Surface weight	approx. 1.9 kg/m ²
Thickness	approx. 1.0 mm
Application temperature	+5 °C to +35 °C ; 41 °F 95 °F; frost-free nights
Temperature resistance	permanent -20 °C to 80 °C ; -4 °F to 176 °F

EXTOSEAL[®] MAGOV Highly flexible airtightness adhesive sealing tape

APPLICATION: Highly elastic adhesive tape for airtight seals, e.g. in the skirting area or for penetrations such as pipes, installation parts etc.

ID Code	GTIN	Length	Width	UE	UE / Pal.	EUR / m	EUR / Roll
14343	4026639143433	10 m	6 cm	5	60	3.05	30.50
14344	4026639143440	10 m	10 cm	3	60	4.39	43.90

ADVANTAGES:

Perfect for sealing penetrations as a result of its particularly strong butyl rubber layer and elastic carrier film with low restoring forces; protects even when highly stretched; protects structural elements from water ingress: watertight and blocks rising damp; creates a secure bond: butyl rubber penetrates deep into the substrate; Bonds to mineral substrates; airtight bonds according to DIN 4108-7, SIA 180 and OENORM B 8110-2; excellent values in the hazardous substance test, has been tested according to the ISO 16000 evaluation scheme

TECHNICAL SPECS:

Backing	elastic PE carrier film
Material	Butyl rubber
Release film	silicone-coated PE film
Surface weight	approx. 3.7 kg/m ²
Thickness	approx. 2.0 mm
Application temperature	+5 °C to +35 °C ; 41 °F 95 °F; frost-free nights
Temperature resistance	permanent -20 °C to 80 °C ; -4 °F to 176 °F

TESCON[®] NAIDECK Double-sided nail sealing tape

APPLICATION: Use as a nail sealing tape under the reverse lath on inclined roof constructions. Suitable as an accessory for creating temporary roof coverings as specified in the German ZVDH product data sheets on roof lining and sarking membranes.

ID Code	GTIN	Length	Width	UE	UE / Pal.	EUR / m	EUR / Roll
11737	4026639117373	20 m	5 cm	6	96	0.93	18.60
11943	4026639119438	20 m	5 cm	24	Prof. unit*	0.82	16.40
1AR00900	4026639209009	20 m	7,5 cm	16	Prof. unit*	1.23	24.60

* Professional unit, only supplied in complete packages

ADVANTAGES:

Very good sealing action – liquid butyl adhesives penetrate deep into the lining structure; water resistant; suitable for temporary roof coverings as specified in the ZVDH product data sheet; extra-strong thanks to a reinforcing layer; contains no bitumen

TECHNICAL SPECS:

Material	Butyl rubber
Release film	siliconized paper
Temperature resistance	permanent -40 °C to 80 °C ; -40 °F to 176 °F
Application temperature	+5 °C bis +35 °C; 41 °F to 95 °F
Exposure time	6 months, installed under the counter battens

TESCON[®] NAIDECK mono Single-sided acrylate adhesive, modified butyl rubber tape for nail sealing

APPLICATION: Single-sided adhesive nail sealing tape under counter battens for sloped roof structures. TESCON NAIDECK mono is suitable for use in creating temporary coverings for underlay and sarking membranes.

ID Code	GTIN	Length	Width	UE	UE / Pal.	EUR / m	EUR / Roll
16441	4026639164414	20 m	4.5 cm	6	60	1.16	23.20
16442	4026639164421	20 m	4.5 cm	12	Prof. unit*	1.01	20.20

* Professional unit, only supplied in complete packages

ADVANTAGES:

Application temperatures as low as -10 °C (14 °F) thanks to butyl rubber modified with acrylate; easy pre-installation possible on counter battens; counter battens can easily be positioned on the roof thanks to PE backing film; nail holes permanently sealed due to the flow behaviour of the butyl rubber; suitable for temporary coverings as per the ZVDH product data sheet

TECHNICAL SPECS:

Backing	PE film
Material	Butyl rubber modified with acrylate
Release film	silicone-coated PE film
Thickness	1.1 mm
Temperature resistance	permanent -40 °C to 80 °C ; -40 °F to 176 °F
Application temperature	-10 °C to 35 °C ; 14 °F to 95 °F
Exposure time	6 months, installed under the counter battens

TESCON[®] NAIDECK mono patch Single-sided acrylate adhesive, modified butyl rubber plaster for nail sealing

APPLICATION: Single-sided adhesive nail sealing plaster under counter battens for sloped roof structures. TESCON NAIDECK mono patch is suitable for use in creating temporary coverings for underlay and sarking membranes. 300 patches on a roll.

ID Code	GTIN	Length	Width	UE	UE / Pal.	EUR / Stk	EUR / Roll
1AR01113	4026639211132	82 mm	62 mm	1	180	0.37	111.00
1AR01053	4026639210531	82 mm	62 mm	3	Prof. unit*	0.33	99.00

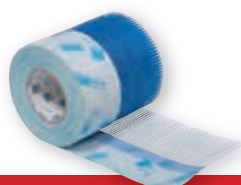
* Professional unit, only supplied in complete packages

ADVANTAGES:

Very good sealing effect: sealing material is pulled into the hole created when a nail or screw is fitted; easy to pre-install on underlay/sarking membranes or battens; conforms to regulations: satisfies the requirements of ZVDH and of SIA 232/1; reliable during the construction phase: suitable for temporary coverings/sealing during construction work; Material savings: patch is only stuck to the counter batten in the area around the nail/screw

TECHNICAL SPECS:

Backing	PE film
Adhesive	Butyl rubber modified with acrylate
Release film	silicone-coated PE film
Thickness	1.1 mm
Temperature resistance	permanent -40 °C to 80 °C ; -40 °F to 176 °F
Application temperature	-10 °C to 35 °C ; 14 °F to 95 °F
Exposure time	6 months, installed under the counter battens



CONTEGA[®] PV

Vapour checking plaster sealing tape with integrated reinforcement fabric

APPLICATION: For well-defined, multifunctional joints between sheets of membrane or wood-based panels and surfaces that will be plastered (brick work or concrete).

ID Code	GTIN	Length	Width	UE	UE / Pal.	EUR / m	EUR / Roll
10124	4026639016058	15 m	20 cm	4	30	2.12	31.80

ADVANTAGES:

PET fleece, easily embedded in plaster, no further plaster reinforcement is necessary; defined transition between the fields of vapour barrier and plaster; permanently reliable, airtight bond according to DIN 4108-7, SIA 180 and OENORM B 8110-2; Reinforcement increases the stability of the adjoining plaster substrate; excellent values in the hazardous substance test, has been tested according to the ISO 16000 evaluation scheme

TECHNICAL SPECS:

Backing	PET fleece with functional membrane and plaster reinforcement
Adhesive	special acrylate adhesive
s _g -value / g-value	2.3 m / 11.5 MN-s/g
Thickness	1.3 mm
Temperature resistance	permanent -40 °C to 90 °C ; -40 °F to 194 °F
Application temperature	above -10 °C ; 14 °F

CONTEGA[®] SOLIDO SL

Full-surface adhesive window sealing tape for interior use

APPLICATION: The joint adhesive tape, which is full-surface adhesive and can be plastered over, ensures interior airtight and vapour-retarding sealing of windows and doors to adjacent building components made of wood and mineral substrates such as concrete and sand-lime brick.

ID Code	GTIN	Length	Width	UE	UE / Pal.	EUR / m	EUR / Roll
15431	4026639154316	30 m	8 cm	8	48	1.28	38.40
15432	4026639154323	30 m	10 cm	8	36	1.60	48.00
15433	4026639154330	30 m	15 cm	4	48	2.37	71.10
15434	4026639154347	30 m	20 cm	4	36	3.17	95.10

ADVANTAGES:

Full-surface adhesive, the joint is immediately airtight and can be subjected to loading; extremely strong adhesion on mineral substrates too thanks to modified waterproof SOLID adhesive; can be plastered over; Tape for joints on or under window frames; easy to apply; excellent values in the hazardous substance test, has been tested according to the ISO 16000 evaluation scheme

TECHNICAL SPECS:

Backing	PP backing fleece, PP copolymer special membrane
Adhesive	modified waterproof SOLID adhesive
Release film	one or two split silicone-coated PE sheet
s _g -value / g-value	2.8 m / 14 MN-s/g
Airtightness	up to 1000 Pa, surrounding
Temperature resistance	permanent -40 °C to 90 °C ; -40 °F to 194 °F
Application temperature	above -10 °C ; 14 °F

CONTEGA[®] SOLIDO SL-D

Full-surface adhesive window sealing tape for interior use with an additional adhesive zone on the fleece side

APPLICATION: The CONTEGA SOLIDO SL-D joint adhesive tape, which is full-surface adhesive and can be plastered over, ensures interior airtight and vapour-retarding sealing of windows and doors to adjacent building components made of wood and mineral substrates such as concrete and masonry. The integrated adhesive zone on the fleece side makes it easy to seal joints to windows and doors.

ID Code	GTIN	Length	Width	UE	UE / Pal.	EUR / m	EUR / Roll
16038	4026639160386	30 m	8 cm	8	36	1.78	53.40
15985	4026639159854	30 m	10 cm	8	36	2.12	63.60
1AR01629	NEW 4026639216298	30 m	15 cm	8	24	2.89	86.70
1AR01637	NEW 4026639216373	30 m	20 cm	4	36	3.68	110.40

ADVANTAGES:

The joint is immediately airtight as a result of full-surface adhesion; extremely strong adhesion on mineral substrates too thanks to SOLID adhesive; can be plastered over; simple joints thanks to the additional adhesive zone; easy to apply; excellent values in the hazardous substance test, has been tested according to the ISO 16000 evaluation scheme

TECHNICAL SPECS:

Backing	PP backing fleece, PP copolymer special membrane
Adhesive	modified waterproof SOLID adhesive / special acrylate adhesive
Release film	one or two split silicone-coated PE sheet
s _g -value / g-value	2.8 m / 14 MN-s/g
Airtightness	up to 1000 Pa, surrounding
Temperature resistance	permanent -40 °C to 90 °C ; -40 °F to 194 °F
Application temperature	above -10 °C ; 14 °F

CONTEGA[®] SL

Double-layer plaster sealing tape with vapour control properties

APPLICATION: CONTEGA SL allows interior airtight sealing of windows and doors.

ID Code	GTIN	Length	Width	UE	UE / Pal.	EUR / m	EUR / Roll
11384	4026639113849	30 m	8.5 cm	8	30	1.04	31.20
11396	4026639113962	30 m	12 cm	8	30	1.39	41.70

ADVANTAGES:

Extra thin for easy folding in the corners; PP copolymer functional membrane; combines well with CONTEGA EXO outdoors; can be plastered over on the fleece side; with three adhesive tapes it is very versatile in timber, masonry and concrete structures; excellent values in the hazardous substance test, has been tested according to the ISO 16000 evaluation scheme

TECHNICAL SPECS:

Backing	PP fleece and special PP copolymer membrane
Adhesive	special acrylate adhesive
s _g -value / g-value	2.3 m / 11.5 MN-s/g
Airtightness	up to 1000 Pa, surrounding
Temperature resistance	permanent -40 °C to 90 °C ; -40 °F to 194 °F
Application temperature	above -10 °C ; 14 °F

Can be plastered over

Can be plastered over

Can be plastered over



CONTEGA[®] EXO Exterior connection plastering tape

APPLICATION: For exterior wind-proof sealing of thermally insulated joints when installing windows and doors.

ID Code	GTIN	Length	Width	UE	UE / Pal.	EUR / m	EUR / Roll
11946	4026639119469	30 m	8,5 cm	8	30	1.04	31.20
11947	4026639119476	30 m	12 cm	8	30	1.39	41.70

ADVANTAGES:

Vapour permeable sealing of outdoor window and door joints; active moisture transport by means of the monolithic TEEE functional membrane; combines well with CONTEGA SL indoors; can be plastered over on the fleece side with three adhesive tapes it is very versatile in timber, masonry and concrete structures

TECHNICAL SPECS:

Backing	double-layer special membrane made of PP fleece and TEEE functional film
Adhesive	special acrylate adhesive
s _a -value / g-value	0.05 m / 0.25 MN-s/g
Resistance to driving rain	up to 600 Pa, surrounding
Temperature resistance	permanent -40 °C to 90 °C ; -40 °F to 194 °F
Application temperature	above -10 °C ; 14 °F
Exposure time	3 months



CONTEGA[®] SOLIDO EXO Full-surface adhesive sealing tape for exterior use that is open to diffusion and can be plastered over

APPLICATION: The joint adhesive tape, which is full-surface adhesive and can be plastered over, ensures exterior wind-tight and diffusion-permeable sealing of windows and doors to adjacent building components made of wood and mineral materials such as concrete and sand-lime brick.

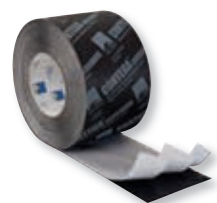
ID Code	GTIN	Length	Width	UE	UE / Pal.	EUR / m	EUR / Roll
15439	4026639154392	30 m	8 cm	8	48	1.28	38.40
15440	4026639154408	30 m	10 cm	8	36	1.60	48.00
15441	4026639154415	30 m	15 cm	4	48	2.37	71.10
15442	4026639154422	30 m	20 cm	4	36	3.17	95.10

ADVANTAGES:

Full-surface adhesive, the joint is immediately windproof and resistant to driving rain, and it can be subjected to loading; extremely strong adhesion on mineral substrates too thanks to modified waterproof SOLID adhesive; can be plastered over; Tape for joints on or under window frames; easy to apply

TECHNICAL SPECS:

Backing	PP backing fleece, PP copolymer special membrane
Adhesive	modified waterproof SOLID adhesive
Release film	one or two split silicone-coated PE sheet
s _a -value / g-value	0.7 m / 3.5 MN-s/g
Resistance to driving rain	up to 600 Pa, surrounding
Exposure time	3 months
Temperature resistance	permanent -40 °C to 90 °C ; -40 °F to 194 °F
Application temperature	above -10 °C ; 14 °F



For masonry structures with one self-adhesive strip

For wooden frame structures with two self-adhesive strips



CONTEGA[®] SOLIDO EXO-D Full-surface adhesive plaster sealing tape for exterior use with an additional adhesive zone on the fleece side

APPLICATION: The CONTEGA SOLIDO EXO-D joint adhesive tape, which is full-surface adhesive and can be plastered over, ensures windtight and diffusion-permeable exterior sealing of windows and doors to adjacent building components made of wood and mineral substrates such as concrete and masonry. The integrated adhesive zone on the fleece side allows for easy adhesion to windows and doors.

ID Code	GTIN	Length	Width	UE	UE / Pal.	EUR / m	EUR / Roll
16135	4026639161352	30 m	8 cm	8	36	1.78	53.40
16136	4026639161369	30 m	10 cm	8	36	2.12	63.60

ADVANTAGES:

The joint is immediately windproof and resistant to driving rain as a result of full-surface adhesion; extremely strong adhesion on mineral substrates too thanks to SOLID adhesive; can be plastered over; simple adhesion; easy to apply

TECHNICAL SPECS:

Backing	PP backing fleece, PP copolymer special membrane
Adhesive	modified waterproof SOLID adhesive / special acrylate adhesive
Release film	one or two split silicone-coated PE sheet
s _a -value / g-value	0.7 m / 3.5 MN-s/g
Resistance to driving rain	up to 600 Pa, surrounding
Temperature resistance	permanent -40 °C to 90 °C ; -40 °F to 194 °F
Application temperature	above -10 °C ; 14 °F

CONTEGA[®] IQ Intelligent plaster sealing tape for indoor and outdoor use

APPLICATION: CONTEGA IQ is used for airtight sealing of windows and doors to the vapour retarder and airtight sealing layer indoors in accordance with DIN 4108-7. It is also suitable for wind-tight and driving rain resistant outdoor connection

ID Code	GTIN	Length	Width	Self-adhesive strips	UE	UE / Pal.	EUR / m	EUR / Roll
12941	4026639129413	30 m	9 cm	1 (Use on masonry and concrete structures)	8	30	1.94	58.20
13016	4026639130167	30 m	9 cm	2 (Use on timber structures)	8	30	2.23	66.90

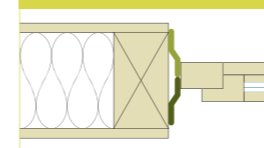
ADVANTAGES:

Moisture-variable g-value: Install on windows with the same tape indoors and outdoors; Vapour retarding and airtight connection of indoor window and door joints in accordance with DIN 4108-7, SIA 180 and OENORM B 8110-2; permeable, wind-tight and driving rain resistant connections outdoors; especially flexible and soft, can easily be folded to fit into corners; can be plastered over on the fleece side; with expansion joint to allow for structural movement; excellent values in the hazardous substance test, has been tested according to the ISO 16000 evaluation scheme

TECHNICAL SPECS:

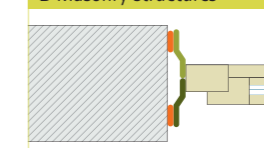
Backing	PP fleece and special PP copolymer membrane
Adhesive	special acrylate adhesive
s _a -value / g-value	0.25 - 10 m - humidity variable / 1.25 - 50 MN s/g - humidity variable
Temperature resistance	permanent -40 °C to 90 °C ; -40 °F to 194 °F
Application temperature	above -10 °C ; 14 °F
Exposure time	3 months

A Wooden frame structures



CONTEGA IQ is bonded at the side of the frame using the first self-adhesive strip and stuck to the soffit all around the window using the second strip.

B Masonry structures



CONTEGA IQ is bonded at the side of the frame using the self-adhesive strip and stuck to the soffit all around the window using the ORCON F joint adhesive.



CONTEGA® FIDEN EXO

Pre-compressed joint sealing tape for exterior use that is open to diffusion and resistant to driving rain

APPLICATION: The CONTEGA FIDEN EXO pre-compressed joint sealing tape for exterior use can be used to create joints on building structures in a manner that is open to diffusion and resistant to driving rain.

ID Code	GTIN	Length	Width	Joint	UE	UE / Pal.	EUR / 100 m	EUR / Roll
15547	4026639155474	10 m	10 mm	2-3 mm	30	60	0.41	4.10
15548	4026639155481	10 m	15 mm	2-3 mm	20	60	0.59	5.90
15549	4026639155498	8 m	12 mm	3-6 mm	25	60	0.52	4.16
15550	4026639155504	8 m	15 mm	3-6 mm	20	60	0.77	6.16
15552	4026639155528	5.0 m	15 mm	5-10 mm	20	60	1.06	5.30
15553	4026639155535	5.0 m	20 mm	5-10 mm	15	60	1.34	6.70
15554	4026639155542	4.3 m	15 mm	7-12 mm	20	60	1.35	5.81
15555	4026639155559	4.3 m	20 mm	7-12 mm	15	60	1.71	7.35
15556	4026639155566	3.3 m	20 mm	8-15 mm	15	60	1.91	6.30
15557	4026639155573	2.6 m	20 mm	10-18 mm	15	60	2.51	6.53

ADVANTAGES:

Particularly weather-resistant; BG1 quality; resistant to driving rain and open to diffusion; RAL quality-tested installation; large range for all standard joint widths

TECHNICAL SPECS:

Material	open-cell polyurethane flexible foam with polymer impregnation
s_d -value / g-value	< 0.5 m / < 2.5 MN s/g
Reaction to fire	B1, P-NDS04-1001
Joint permeability	$a < 0,1 \text{ m}^3/[(h \cdot m) \cdot (\text{daPa})n]$
Resistance to driving rain	requirements fulfilled up to 600 Pa
Weather resistance	passed
Application temperature	above +1 °C ; 34 °F
Temperature resistance	permanent: -30 °C to +90 °C ; -22 °F to 194 °F
Storage	1 °C to 20 °C ; 34 °F to 68 °F, 12 months, cool and dry

TESCON® SPRIMER

Sprayable primer

APPLICATION: Wash primer for wood, wood-fibre boards, masonry, roofs, walls and ground slabs for subsequent adhesion with pro clima adhesive tapes such as TESCON VANA, TESCON PROTECT and the EXTOSSEAL range.

Art	ID Code	GTIN	Volume	Adhesive tape width	Coverage	UE	UE / Pal.	EUR / Unit
Spray can	1AR01114	4026639211149	400 ml	60 mm	ca. 20 m	12	84	9.99
				75 mm	ca. 17 m			
				150 mm	ca. 9 m			
Spray can	1AR01050	4026639210500	750 ml	60 mm	ca. 38 m	6	56	17.44
				75 mm	ca. 31 m			
				150 mm	ca. 17 m			

The amounts required can vary depending on the subsurface and application method used.

ADVANTAGES:

Easy to apply - spray on directly from the can, no contamination of the primer in its container; secure bonds: penetrates deep and strengthens dusty sub-surfaces or subsurfaces with insufficient load-bearing capacity; saves time: adhesive tapes can be stuck to absorbent subsurfaces with no drying time; flexible use: use on dry and slightly moist subsurfaces; at any time of the year: can also be applied during frosty conditions

TECHNICAL SPECS:

Material	Synthetic rubber
Temperature resistance	permanent -25 °C to ~90 °C, short-term up to 100 °C (1h); °F: -13 to ~195; 212
Application temperature	-5 °C to 40 °C ; 23 °F to 104 °F
Storage	protect from frost, cool and dry



TESCON® PRIMER RP

Solvent-free primer, no drying required

APPLICATION: Wash primer for wood, wood-fibre boards, masonry, roofs, walls and ground slabs for subsequent adhesion with pro clima adhesive tapes such as TESCON VANA, TESCON PROTECT and the EXTOSSEAL range.

Art	ID Code	GTIN	Volume	Width	Coverage	UE	UE / Pal.	EUR / Unit
Tin	11427	4026639114273	0.75 l	60 mm	ca. 60 m	6	90	14.36
				75 mm	ca. 45 m			
				150 mm	ca. 22 m			
Tin	11430	4026639114303	2.5 l	60 mm	ca. 185 m	4	40	42.95
				75 mm	ca. 150 m			
				150 mm	ca. 75 m			
Dispenser bottle	11449	4026639114495	1 l	60 mm	ca. 75 m	6	72	17.82
				75 mm	ca. 60 m			
				150 mm	ca. 30 m			

The amounts required can vary depending on the subsurface and application method

ADVANTAGES:

No drying required - adhesive can be applied straight to the damp primer on absorbent substrates; deep penetration of the primer, excellent hardening; Application even on damp substrate; Can also be used in the event of frost; can be used with any pro clima adhesive tape; solvent free

TECHNICAL SPECS:

Material	acrylic copolymer, solvent-free
Temperature resistance	permanent -40 °C to 90 °C ; -40 °F to 194 °F
Application temperature	-10 °C to 45 °C ; 14 °F to 113 °F
Storage	protect from frost, cool and dry



TENAPP application tool
see page 43

Tested for harmful substances
in accordance with



Based on the criteria of the Committee
for Health-Related Evaluation of
Construction Products at the German
Federal Environment Agency



TESCON® Vana patch Adhesive plaster

APPLICATION: TESCON VANA patch for quick and permanent airtight and windtight repair adhesion and for adhesion of interior and exterior blown-in insulation holes.

ID Code	GTIN	Length	Width	UE	UE / Pal.	EUR / Unit	EUR / UE
10795	4026639016560	18 cm	18 cm	25	-	0.78	19.50
10595	4026639016553	18 cm	18 cm	150	112	0.70	105.00

ADVANTAGES:

Saves time: ready-to-install adhesive plaster, protruding release film is easy to remove; sticks reliably for interior and exterior use – even if moisture is present: waterproof SOLID adhesive; subsequent work becomes more flexible: 6 months of outdoor exposure; subsequent work becomes more flexible: fleece backing can be plastered over directly; construction in adherence with standards: for airtight bonding in accordance with DIN 4108-7, SIA 180 and OENORM B 8110-2; excellent values in the hazardous substance test, has been tested according to the ISO 16000 evaluation scheme; can be plastered over

TECHNICAL SPECS:

Backing	special PP fleece
Adhesive	waterproof SOLID adhesive
Release film	siliconized paper
Temperature resistance	permanent -40 °C to 90 °C ; -40 °F to 194 °F
Application temperature	above -10 °C ; 14 °F
Exposure time	6 months

TESCON® SANAPATCH Adhesive patch with easy-off function for adhesion at locations that are difficult to access

APPLICATION: Adhesive patch with easy-off function for adhesion and sealing at locations with limited space that are difficult to access.

ID Code	GTIN	Length	Width	UE	EUR / Unit	EUR / UE
16374	4026639163745	130 mm	100 mm	25	1.22	30.50

ADVANTAGES:

The protruding release film allows for simple, quick and clean adhesion at locations that are difficult to access; the release film is only removed once the adhesive patch has been positioned and aligned correctly; the slits in the release film can be adapted to suit individual construction requirements; joints can be stuck reliably 6 months of outdoor exposure; waterproof adhesive

TECHNICAL SPECS:

Backing	special PP fleece
Adhesive	waterproof SOLID adhesive
Release film	silicone-coated PE film
Temperature resistance	permanent -40 °C to 90 °C ; -40 °F to 194 °F
Application temperature	above -10 °C ; 14 °F
Exposure time	6 months

UNI TAPE XL For permanently airtight and secure repairs to indoor joints. Also suitable for sealing injection holes.

APPLICATION: For permanently airtight and secure repairs to indoor joints. Also suitable for sealing injection holes.

ID Code	GTIN	Length	Width	UE	UE / Pal.	EUR / m	EUR / Roll
10111	4026639016379	30 m	20 cm	1	112	2.17	65.10
10112	4026639016324	30 m	15 cm	1	112	1.64	49.20

ADVANTAGES:

Ensures reliable building components thanks to waterproof SOLID adhesive; particularly long-lasting: adhesion for 100 years, independently tested and confirmed; easy to work with: paper backing, can be torn off by hand; construction in adherence with standards: for airtight bonding in accordance with DIN 4108-7, SIA 180 and OENORM B 8110-2; excellent values in the hazardous substance test, has been tested according to the ISO 16000 evaluation scheme; can be plastered over

TECHNICAL SPECS:

Backing	special paper with reinforcement layer
Adhesive	waterproof SOLID adhesive
Release film	siliconized paper
Temperature resistance	permanent -40 °C to 90 °C ; -40 °F to 194 °F
Application temperature	above -10 °C ; 14 °F

**100 YEARS
ADHESION**
✓ successfully tested
✓ unique worldwide
www.proclima.com/100years

KAFLEX mono/duo Sealing grommets for 1/2 cable, Ø 4.8 – 12 mm (3/16"-1/2")

APPLICATION: Sealing grommet made of strong and highly flexible EPDM. Ideally suited for rapid and permanent airtight feedthroughs for cables and pipes through the airtight sealing layer. Can also be used outdoors, e.g. for sub-roofs and for refurbishment vapour check.

Product	ID Code	GTIN	Length	Width	UE	EUR / Unit	EUR / UE
KAFLEX mono for 1 cable – Ø 4,8-12 mm	10724	4026639016195	14.5 cm	14.5 cm	5	2.94	14.70
KAFLEX mono for 1 cable – Ø 4,8-12 mm	10725	4026639016188	14.5 cm	14.5 cm	30	2.24	67.20
KAFLEX duo for 2 cables – Ø 4,8-12 mm	10726	4026639016171	14.5 cm	14.5 cm	5	2.94	14.70
KAFLEX duo for 2 cables – Ø 4,8-12 mm	10727	4026639016072	14.5 cm	14.5 cm	30	2.24	67.20

ADVANTAGES:

Secure bond, quick and secure sealing, indoors or out; high-quality EPDM, extremely flexible and elastic, no excess bushing; waterproof, also suitable for penetrations in façades and roof linings; cables can be still be pulled or pushed; 6 months of outdoor exposure; excellent values in the hazardous substance test, has been tested according to the ISO 16000 evaluation scheme; can be plastered over

TECHNICAL SPECS:

Material	TESCON VANA width EPDM
Adhesive	waterproof SOLID adhesive
Release film	siliconized paper
Temperature resistance	permanent -40 °C to 150 °C ; -40 °F to 302 °F
Application temperature	above -10 °C ; 14 °F

KAFLEX multi Multiple cable grommet, for up to 16 cables, Ø 4.8 – 12 mm (3/16"-1/2")

APPLICATION: Cable harness grommets for quick and permanent sealing of penetrations with several cables. Sets for up to 16 cables with a diameter of 4.8-12 mm, including template and punching tool.

Product	ID Code	GTIN	Length	Width	UE	EUR / Unit	EUR / UE
KAFLEX multi for up to 16 cables – Ø 4.8-12 mm	10728	4026639016096	14 cm	14 cm	2*	10.66	21.32
KAFLEX multi for up to 16 cables – Ø 4.8-12 mm	10729	4026639016102	14 cm	14 cm	20	8.00	160.00

* incl. 2 m adhesive tape per box

ADVANTAGES:

Complete set for up to 16 cables; secure bond, quick and secure sealing, indoors or out; high-quality EPDM, extremely flexible and elastic, no excess bushing; waterproof, also suitable for penetrations in façades and roof linings; cables can be still be pulled or pushed; excellent values in the hazardous substance test, has been tested according to the ISO 16000 evaluation scheme; can be plastered over

TECHNICAL SPECS:

Material	EPDM
Temperature resistance	permanent -40 °C to 150 °C ; -40 °F to 302 °F
Application temperature	above -10 °C ; 14 °F

KAFLEX post Cable grommets for subsequent installation

APPLICATION: Sealing grommets for quick and permanently secure incorporation of pre-installed cables in the indoor airtightness layer. Also suitable for outdoor use.

Product	ID Code	GTIN	Length	Width	UE	EUR / Unit	EUR / UE
KAFLEX post for 1 cable to Ø 12 mm	12942	4026639129420	14 cm	14 cm	5	3.48	17.40
KAFLEX post for 1 cable to Ø 12 mm	12943	4026639129437	14 cm	14 cm	20	2.61	52.20

ADVANTAGES:

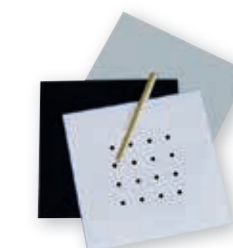
Easily create secure seals around cables that are already in place; extremely flexible and elastic; quick and easy installation; waterproof, also suitable for penetrations in façades and roof linings; airtight bonds according to DIN 4108-7, SIA 180 and OENORM B 8110-2; excellent values in the hazardous substance test, has been tested according to the ISO 16000 evaluation scheme

TECHNICAL SPECS:

Backing	special PP-fleece / perforated PE-foil
Adhesive	waterproof SOLID adhesive
Release film	siliconized paper
Temperature resistance	permanent -40 °C to 90 °C ; -40 °F to 194 °F
Application temperature	above -10 °C ; 14 °F



Can be plastered over





ROFLEX 20

Sealing grommets for pipes Ø 15 – 30 mm (5"-1.5")

APPLICATION: Sealing grommet made of strong and highly flexible EPDM. Ideally suited for rapid and permanent airtight feedthroughs for cables and pipes through the airtight sealing layer. Can also be used outdoors, e.g. for sub-roofs and for refurbishment vapour check.

Product	ID Code	GTIN	Length	Width	UE	EUR / Unit	EUR / UE
ROFLEX 20 for pipes – Ø 15-30 mm	10730	4026639016393	14.5 cm	14.5 cm	5	3.37	16.85
ROFLEX 20 for pipes – Ø 15-30 mm	10731	4026639016416	14.5 cm	14.5 cm	30	2.49	74.70

ADVANTAGES:

Secure bond, quick and secure sealing, indoors or out; high-quality EPDM, extremely flexible and elastic, no excess bushing; waterproof, also suitable for penetrations in façades and roof linings; Pipes and cables can be still be pulled or pushed; 6 months of outdoor exposure; excellent values in the hazardous substance test, has been tested according to the ISO 16000 evaluation scheme

TECHNICAL SPECS:

Material	TESCON VANA width EPDM
Adhesive	waterproof SOLID adhesive
Release film	siliconized paper
Temperature resistance	permanent -40 °C to 150 °C ; -40 °F to 302 °F
Application temperature	above -10 °C ; 14 °F

ROFLEX 20 multi

Multi conduit grommet for up to 9 conduits

APPLICATION: Conduit grommet made of strong and highly flexible EPDM for simple, rapid and permanent airtight feed-throughs for up to 9 pipes through the airtight sealing layer or under the roof. Complete assembly set for easy installation. Stick with TESCON VANA. For between 1 and 9 pipes of 15 – 30 mm (.5"-1.5") in diameter.

Product	ID Code	GTIN	Length	Width	UE	EUR / Unit	EUR / UE
ROFLEX 20 multi for up to 9 pipes	12936	4026639129369	20 cm	20 cm	2*	15.87	31.74

* incl. 2 m adhesive tape per box

ADVANTAGES:

Complete set for up to 9 pipes; secure bond, quick and secure sealing, indoors or out; high-quality EPDM, extremely flexible and elastic, no excess bushing; waterproof, also suitable for penetrations in façades and roof linings; Pipes and cables can be still be pulled or pushed; excellent values in the hazardous substance test, has been tested according to the ISO 16000 evaluation scheme

TECHNICAL SPECS:

Material	EPDM
Temperature resistance	permanent -40 °C to 150 °C ; -40 °F to 302 °F
Application temperature	above -10 °C ; 14 °F

ROFLEX 30/50/100/150/200/250/300

Sealing grommets

APPLICATION: Sealing grommet made of strong and highly flexible EPDM. Ideally suited for rapid and permanent airtight feedthroughs for pipes through the airtight sealing layer. Can also be used outdoors, e.g. for sub-roofs and for refurbishment vapour check. Stick with TESCON VANA.

Product	ID Code	GTIN	Length	Width	UE	EUR / Unit	EUR / UE
ROFLEX 30 for pipes Ø 30-50 mm	14166	4026639141668	14 cm	14 cm	2	4.84	9.68
ROFLEX 30 for pipes Ø 30-50 mm	14167	4026639141675	14 cm	14 cm	20	3.15	63.00
ROFLEX 50 for pipes Ø 50-90 mm	10732	4026639016430	14 cm	14 cm	2	4.84	9.68
ROFLEX 50 for pipes Ø 50-90 mm	10733	4026639016447	14 cm	14 cm	20	3.15	63.00
ROFLEX 100 for pipes Ø 100-120 mm	10734	4026639016454	20 cm	20 cm	2	5.66	11.32
ROFLEX 100 for pipes Ø 100-120 mm	10735	4026639016461	20 cm	20 cm	20	3.70	74.00
ROFLEX 150 for pipes Ø 120-170 mm	10736	4026639016478	25 cm	25 cm	2	7.72	15.44
ROFLEX 150 for pipes Ø 120-170 mm	10737	4026639016485	25 cm	25 cm	20	5.01	100.20
ROFLEX 200 for pipes Ø 170-220 mm	10738	4026639016492	30 cm	30 cm	2	9.36	18.72
ROFLEX 200 for pipes Ø 170-220 mm	10740	4026639016508	30 cm	30 cm	20	6.09	121.80
ROFLEX 250 for pipes Ø 220-270 mm	12832	4026639128324	45 cm	45 cm	2	13.92	27.84
ROFLEX 300 for pipes Ø 270-320 mm	12842	4026639128423	50 cm	50 cm	2	17.30	34.60

ADVANTAGES:

Secure bond, quick and secure sealing, indoors or out; high-quality EPDM, extremely flexible and elastic, no excess bushing; waterproof, also suitable for penetrations in façades and roof linings; Pipes can be still be pulled or pushed; excellent values in the hazardous substance test, has been tested according to the ISO 16000 evaluation scheme

TECHNICAL SPECS:

Material	EPDM
Temperature resistance	permanent -40 °C to 150 °C ; -40 °F to 302 °F
Application temperature	above -10 °C ; 14 °F

ROFLEX SOLIDO

Pipe grommets that can be plastered over

APPLICATION: Full-surface adhesive grommet that can be plastered over for quick, permanently sealed joints for pipe feed-throughs with masonry and concrete walls and ceilings, both indoors and outdoors.

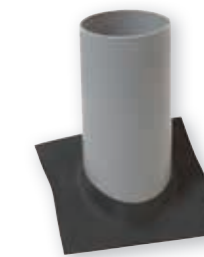
Product	ID Code	GTIN	Ø Grommets	for Ø Pipes	UE	EUR /Unit	EUR /UE
ROFLEX SOLIDO 50	1AR00954	4026639209542	200 mm	Ø 50-80 mm	2	4,53	9,06
ROFLEX SOLIDO 50	1AR01136	4026639211361	200 mm	Ø 50-80 mm	10	3,60	36,00
ROFLEX SOLIDO 100	1AR01137	4026639211378	250 mm	Ø 90-120 mm	2	5,90	11,80
ROFLEX SOLIDO 100	1AR01138	4026639211385	250 mm	Ø 90-120 mm	10	4,98	49,80
ROFLEX SOLIDO 150	1AR01139	4026639211392	296 mm	Ø 130-170 mm	2	8,22	16,44
ROFLEX SOLIDO 150	1AR01140	4026639211408	296 mm	Ø 130-170 mm	10	7,29	72,90
ROFLEX SOLIDO 200	1AR01141	4026639211415	346 mm	Ø 180-220 mm	2	11,34	22,68
ROFLEX SOLIDO 200	1AR01142	4026639211422	346 mm	Ø 180-220 mm	10	10,33	103,30

ADVANTAGES:

Keeps building components dry: quick and simple sealing for masonry and concrete structures, both indoors and outdoors; reliable joints thanks to waterproof SOLID adhesive; practical handling: pipes can be pushed and pulled through the grommet – the joint remains sealed; Extremely flexible and elastic, no protruding sleeve; Construction in adherence with standards: for airtight bonding in accordance with DIN 4108-7, SIA 180 and OENORM B 8110-2; excellent values in the hazardous substance test, has been tested according to the ISO 16000 evaluation scheme

TECHNICAL SPECS:

Material	PP backing fleece, PP copolymer special membrane, sealing ring: EPDM
Adhesive	waterproof SOLID adhesive
Release film	siliconized paper
Exposure time	3 months
Application temperature	above -10 °C ; 14 °F
Temperature resistance	permanent -40 °C to +90 °C / -40 °F to 194 °F



ROFLEX 50/100/200



All grommets and detail solutions can only be supplied as complete sales units. Larger sales units are possible upon request. Get in touch with us: +49 (0) 62 02 – 27 82.0



ROFLEX exto

Vent pipe grommet for the windproof adhesion to pipes of vent tiles

APPLICATION: The size of ROFLEX exto makes it easy to bond to the roof sarking or roof lining under the positioned vent tile. If required, the grommet can be flexibly adapted. The adhesive patch is permeable.

ID Code	GTIN	Length	Width	UE	EUR / Unit
14223	4026639142238	560 mm	380 mm	1	13.35

ADVANTAGES:

Permanently tight seal: windproof, waterproof, permeable; precise positioning and easy to stick: the grommet extends laterally over the vent pipe tile; reversible: The vent pipe can be easily pulled out of the grommet and reinserted; centrally divided backing paper is easy to remove; high-quality sleeve: any water reaching the pipe is diverted to the sides

TECHNICAL SPECS:

Material	Special PP fleece
Adhesive	waterproof SOLID adhesive
Release film	centrally divided silicone-coated PE film
Pipe diameter	100 - 120 mm
Exposure time	6 months
Application temperature	above -10 °C ; 14 °F
Temperature resistance	permanent -40 °C to 90 °C ; -40 °F to 194 °F



WELDANO ROFLEX

Homogeneously weldable pipe grommet in the SOLITEX WELDANO roof lining system

APPLICATION: For reliable installation of pipe feed-throughs within the SOLITEX WELDANO system. The prefabricated grommet can be used to execute pipe feed-throughs in an easy, quick and permanently sealed manner. Suitable for roof pitches between 5° and 25°.

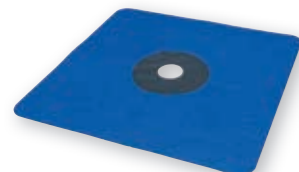
ID Code	GTIN	Ø Grommets	for Ø Pipes	UE	UE / Pal.	EUR / Unit	EUR / UE
16371	4026639163714	225 mm	90-125 mm	1	-	27.74	27.74
16372	4026639163721	225 mm	90-125 mm	10	96	22.20	222.00

ADVANTAGES:

Homogeneously weldable in the SOLITEX WELDANO system with a welding liquid or with heat; the pipes can be shifted or pulled subsequently without damaging the seal; extremely high tear-resistance; windproof, rainproof and watertight; for pipes with diameters of 90 - 125 mm (3.5" - 5")

TECHNICAL SPECS:

Material	Polyurethan
Pipe diameter	90 - 125 mm
Exposure time	3 months
Temperature resistance	permanent -40 °C to 80 °C ; -40 °F to 176 °F



WELDANO ROFLEX PLUS

Homogeneously weldable pipe grommet in the SOLITEX WELDANO roof lining system for roof pitches up to 50°

APPLICATION: Homogeneously weldable pipe grommet for reliable installation of pipe feed-throughs within the SOLITEX WELDANO roof lining system. Suitable for roof pitches between 5° and 50°.

ID Code	GTIN	Length	Width	for Pipes-ø	Weight	UE	EUR / Unit	EUR / UE
1AR00452	4026639204523	480 mm	480 mm	90-120 mm	0.25 kg	1	27.74	27.74
1AR00453	4026639204530	480 mm	480 mm	90-120 mm	1.6 kg	10	22.20	222.00

ADVANTAGES:

Homogeneously weldable as part of the SOLITEX WELDANO system with a solvent welding agent or hot air; for roof pitches between 5° and 50°; for sealing in the case of backed-up water, the flange can simply be extended using SOLITEX WELDANO-S; extremely high tear-resistance and very stable; windproof, rainproof and watertight

TECHNICAL SPECS:

Material	Polyurethane-polyester composite, middle part extendible
Thickness	2 ±0.5 mm ; 79 ±20 mils
Pipe diameter	90 - 120 mm ; 3.5" - 4.75"
s ₀ -Value / g-value	0,6 ±0,2 m / 3 ±1 MN-s/g
Exposure time	3 months
Temperature resistance	permanent -40 °C to 100 °C ; -40 °F to 212 °F

WELDANO TURGA

Welding liquid in the SOLITEX WELDANO roof lining system

APPLICATION: Welding liquid for waterproof adhesion of overlaps for roof lining membranes made of PU (e.g. SOLITEX WELDANO). Also suitable for adhesion of accessories - such as SOLITEX WELDANO-S sealing strips - that are used to seal details.

ID Code	GTIN	Volume	Coverage: Width mind. 30 mm	UE	UE / Pal.	EUR / Litre	EUR / Can
16436	4026639164360	1 L	ca. 200-250 lfm	6	50	29.19	29.19

The amounts required can vary depending on the subsurface and application method used.

ADVANTAGES:

Economical to apply; reliable homogeneous bonds can quickly be subjected to loading; customised welding liquid in the SOLITEX WELDANO roof lining system

TECHNICAL SPECS:

Material	Tetrahydrofuran (90 %), Cyclohexanon (10 %)
Colour	transparent
Application temperature	> 0 °C, optimally 18-20 °C ; 32 °F, optimally 64-68 °F
Storage	15 °C to 25 °C ; 60 °F to 77 °F, dry and well ventilated, only in the original container, keep away from heat and sources of ignition



WELDANO INCAV

Homogeneously weldable shaped element for interior corners in the SOLITEX WELDANO roof lining system

APPLICATION: For reliable installation of joints at interior corners within the SOLITEX WELDANO system. The permeable shaped element, which is supplied pre-welded, can be welded to the pro clima SOLITEX WELDANO roof lining membrane in a homogeneous manner in terms of materials using the system solvent welding agent or hot air.

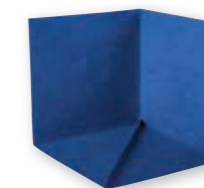
ID Code	GTIN	Strip length	Strip width	UE	EUR / Unit	EUR / UE
16361	4026639163615	15 cm	15 cm	4	6.92	27.68
16363	4026639163639	15 cm	15 cm	20	5.61	112.20

ADVANTAGES:

Homogeneously weldable in the SOLITEX WELDANO system with a welding liquid or with heat; excellent reliability for this vulnerable joint thanks to prefabrication; extremely high tear-resistance; non-slip and abrasion-resistant surface; can be easily adapted for smaller independent adhesive strip lengths, for example, using a knife or scissors

TECHNICAL SPECS:

Membrane, both sides	Polyurethane
Substructure fleece	Polyester
s ₀ -value / g-value	0,18 ±0,04 m / 0,9 ±0,2 MN-s/g
Exposure time	3 months
Temperature resistance	permanent -40 °C to 100 °C ; -40 °F to 212 °F



WELDANO INVEX

Homogeneously weldable shaped element for exterior corners in the SOLITEX WELDANO roof lining system

APPLICATION: For reliable installation of joints at exterior corners within the SOLITEX WELDANO system. The permeable shaped element, which is supplied pre-welded, can be welded to the pro clima SOLITEX WELDANO roof lining membrane in a homogeneous manner in terms of materials using the system solvent welding agent or hot air.

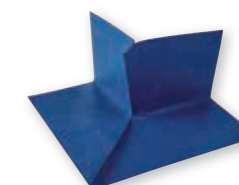
ID Code	GTIN	Strip length	Strip width	UE	EUR / Unit	EUR / UE
16366	4026639163660	15 cm	15 cm	4	11.27	45.08
16368	4026639163684	15 cm	15 cm	20	9.97	199.40

ADVANTAGES:

Homogeneously weldable in the SOLITEX WELDANO system with a welding liquid or with heat; Excellent reliability for this vulnerable joint thanks to prefabrication; Extremely high tear-resistance; Non-slip and abrasion-resistant surface; Can be easily adapted for smaller independent adhesive strip lengths, for example, using a knife or scissors

TECHNICAL SPECS:

Membrane, both sides	Polyurethan
Substructure fleece	Polyester
s ₀ -value / g-value	0,18 ±0,04 m / 0,9 ±0,2 MN-s/g
Exposure time	3 months
Temperature resistance	permanent -40 °C to 100 °C ; -40 °F to 212 °F



All grommets and detail solutions can only be supplied as complete sales units. Larger sales units are possible upon request. Get in touch with us: +49 (0) 62 02 - 27 82.0



TESCON® TANGO

Self-adhesive patch for interior corners

APPLICATION: Self-adhesive patch made with TESCON adhesive tape for interior corners for sealing in indoor and outdoor areas.

Adhesion to

- Vapour retarder and airtight membranes made of film and paper
- Vapour retarder and airtight membranes made of hard wood-based panels
- Underlay, sarking and wall lining membranes
- Wood fibre underlay panels (pretreatment with TESCON PRIMER RP)
- Adjacent building components made of planed wood, hard plastics or metals, such as windows, doors, beams, ties etc.

These bonds will correspond to the requirements of DIN 4108-7, SIA 180 and OENORM B 8110-2.

ID Code	GTIN	Strip length	UE	EUR / Unit	EUR / UE
1AR01092	4026639210920	6 cm	4	1.01	4.04
1AR01093	4026639210937	6 cm	20	0.81	16.20

ADVANTAGES:

Saves time: simple installation thanks to innovative positioning zone; more flexible work: now also works for angles other than right angles; can be easily adapted using a knife or scissors; sticks reliably for interior and exterior use – even if moisture is present: waterproof SOLID adhesive; associated construction work becomes more flexible: 6 months of outdoor exposure; continue work more quickly: fleece backing can be plastered over directly; Construction in adherence with standards: for airtight bonding in accordance with DIN 4108-7, SIA 180 and OENORM B 8110-2; excellent values in the hazardous substance test, has been tested according to the ISO 16000 evaluation scheme

TECHNICAL SPECS:

Backing	special PP fleece
Adhesive	waterproof SOLID adhesive
Release film	silicone-coated PE film
Exposure time	6 Months
Application temperature	above -10 °C ; 14 °F
Temperature resistance	permanent -40 °C to +90 °C

TESCON® INCAV

Self-adhesive 3D interior corners – shaped element

APPLICATION: Adhesion to vapour retarder and airtight membranes made of film and paper, vapour retarder and airtight membranes made of hard wood-based panels, underlay, sarking and wall lining membranes, wood fibre underlay panels (pre-treat with TESCON PRIMER RP or TESCON SPRIMER), adjacent building components made of planed wood, hard plastics or metals, such as windows, doors, beams, ties etc.

ID Code	GTIN	Strip length	Strip width	UE	EUR / Unit	EUR / UE
14758	4026639147585	6 cm	6 cm	4	2.58	10.32
14759	4026639147592	6 cm	6 cm	20	2.00	40.00

ADVANTAGES:

Stick corners in a simple, reliable manner with a prefabricated shaped element; sticks reliably for interior and exterior use – even if moisture is present: waterproof SOLID adhesive; can be used flexibly: can be adapted to suit individual requirements; corner can be folded over: Adhesive area can face inwards or outwards; easy to work with, even for non-angled joints: very malleable; subsequent work becomes more flexible: 6 months of outdoor exposure; excellent values in the hazardous substance test, has been tested according to the ISO 16000 evaluation scheme

TECHNICAL SPECS:

Backing	special PP fleece
Adhesive	waterproof SOLID adhesive
Release film	silicone-coated PE film
Strip length	6 cm
Exposure time	6 months
Application temperature	above -10 °C ; 14 °F
Temperature resistance	permanent -40 °C to +90 °C ; -40 °F to 194 °F



TESCON® INVEX

Self-adhesive 3D exterior corners – shaped element

APPLICATION: Vapour retarder and airtight membranes made of film and paper, vapour retarder and airtight membranes made of hard wood-based panels, underlay, sarking and wall lining membranes, wood fibre underlay panels (pre-treat with TESCON PRIMER RP or TESCON SPRIMER), adjacent building components made of planed wood, hard plastics or metals, such as windows, doors, beams, ties etc.; excellent values in the hazardous substance test, has been tested according to the ISO 16000 evaluation scheme

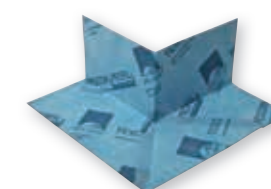
ID Code	GTIN	Strip length	Strip width	UE	EUR / Unit	EUR / UE
14761	4026639147615	6 cm	6 cm	4	2.99	11.96
14760	4026639147608	6 cm	6 cm	20	2.40	48.00

ADVANTAGES:

Stick corners in a simple, reliable manner with a prefabricated shaped element; sticks reliably for interior and exterior use – even if moisture is present: waterproof SOLID adhesive; can be used flexibly: can be adapted to suit individual requirements; corner can be folded over: adhesive area can face inwards or outwards; easy to work with, even for non-angled joints: very malleable; subsequent work becomes more flexible: 6 Months of outdoor exposure; excellent values in the hazardous substance test, has been tested according to the ISO 16000 evaluation scheme

TECHNICAL SPECS:

Backing	special PP fleece
Adhesive	waterproof SOLID adhesive
Release film	silicone-coated PE film
Strip length	6 cm
Exposure time	6 months
Application temperature	above -10 °C ; 14 °F
Temperature resistance	permanent -40 °C to +90 °C ; -40 °F to 194 °F



All grommets and detail solutions can only be supplied as complete sales units. Larger sales units are possible upon request. Get in touch with us: +49 (0) 62 02 – 27 82.0

INSTAABOX Installation box

APPLICATION: For structures without dry lining, the INSTAABOX can create space for junction boxes and the like. It is attached and sealed so that it is airtight to the existing vapour retarding and airtightness layer. The INSTAABOX can be used on both interior and exterior walls.

ID Code	GTIN	Length	Width	UE	EUR / Unit	EUR / UE
11751	4026639117519	320 mm	190 mm	5	3.37	16.85
11942	4026639119421	320 mm	190 mm	20	3.09	61.80

ADVANTAGES:

Airtight installation of junction boxes without dry lining in accordance with the requirements of DIN 4108-7, SIA 180 and OENORM B8110-2; provides space for up to three junction boxes; can be extended at will by cutting and sticking together again; for cables and conduits up to 20 mm (.79") in diameter; excellent values in the hazardous substance test, has been tested according to the ISO 16000 evaluation scheme

TECHNICAL SPECS:

Material	polyethylene, flexible and extensible
Temperature resistance	-10 °C to +80 °C ; 14 °F to 176 °F
Cable diameter	above 20 mm
s _d -value / g-value	> 10 m / > 50 MNs/g
Depth	55 mm
Length / width installation space/cavern	260 mm / 130 mm
Length / Width	320 mm / 190 mm

STOPPA Airtight plugs for conduits

APPLICATION: The sealing plugs, STOPPA, are used for the quick and lasting, secure airtight installation of cables in conduits in accordance with DIN 4108-7. Conduit grommets (e.g. ROFLEX 20 or ROFLEX 20 multi) are available for the airtight connection of conduits to the vapour retarder and airtightness membrane.

Product	ID Code	GTIN	External diameter	Internal diameter	UE	EUR / Unit	EUR / UE
STOPPA 16	12945	4026639129451	16 mm	11 mm	20	0.74	14.80
STOPPA 16	12946	4026639129468	16 mm	11 mm	100	0.64	64.00
STOPPA 20	12947	4026639129475	20 mm	15 mm	20	0.78	15.60
STOPPA 20	12948	4026639129482	20 mm	15 mm	100	0.69	69.00
STOPPA 25	12949	4026639129499	25 mm	19.5 mm	20	0.85	17.00
STOPPA 25	12950	4026639129505	25 mm	19.5 mm	100	0.75	75.00
STOPPA 32	12951	4026639129512	32 mm	25 mm	20	0.91	18.20
STOPPA 32	12952	4026639129529	32 mm	25 mm	100	0.80	80.00
STOPPA 40	12953	4026639129536	40 mm	31.5 mm	20	0.97	19.40
STOPPA 40	12954	4026639129543	40 mm	31.5 mm	100	0.86	86.00

ADVANTAGES:

Quick and easy airtight sealing in accordance with DIN 4108-7, SIA 180 and OENORM B8110-2; flexible press-out membrane seals around cables of various diameters; easy to pierce with nails or cartridge nozzles; multi-layered sealing lips ensure optimum connection to profiled pipes; can be used for more than one cable; can be removed at a later date

TECHNICAL SPECS:

Material	Thermoplastic elastomer (TPE)
Temperature resistance	permanent -50 °C to 90 °C ; -58 °F to 194 °F
Application temperature	> -10 °C ; 14 °F
Storage	cool and dry

AEROSANA[®] VISCONN

Sprayable airtightness sealant with a humidity-variable s_d value

APPLICATION: For use as a humidity-variable vapour retarder and airtight layer that can be applied as a spray or using a brush on surfaces such as non-plastered masonry or porous panel-form materials – both indoors and outdoors. Also suitable for building component joints and for strengthening subsurfaces in the case of renovation.

Product	Art.-Nr.	GTIN	Volume	Demand	UE	UE / Pal.	EUR / litre	EUR / UE
AEROSANA VISCONN	1AR01106	4026639211064	10 litres	750 g/m ²	1	45	10,33	103,30
AEROSANA VISCONN white	NEW 1AR01740	4026639217400	10 litres	750 g/m ²	1	45	10,33	103,30

ADVANTAGES:

Time-saving; ready-to-use dispersion; reliable structures thanks to excellent adhesive properties on all standard construction surfaces; for robust building components: permanent elasticity and high durability once it has dried; improves surfaces: forms a bonding course between subsurfaces and subsequent coatings; can be plastered/painted over, pro clima adhesive tapes can be stuck onto it; flexible use in indoor and protected outdoor areas thanks to its humidity-variable s_d value, excellent values in the hazardous substance test, has been tested according to the ISO 16000 evaluation scheme

TECHNICAL SPECS:

Material	Aqueous acrylic dispersion
s _d -value / s _d -value humidity variable	6 ±0,6 m (at 0.3 mm thickness) / 0.13 - 10.00 m
g-value / g-value humidity variable	30.55 MN-s/g (at 0.3 mm thickness) / 0.65 - 50 MN-s/g
Water column	2.000 mm ; 6' 7"
Application temperature	5 °C to +35 °C ; 41 °F to 95 °F
Temperature resistance	permanent -25 °C to 90 °C ; -40 °F to 194 °F (dried)
Drying	approx. 12 - 48 hours (at 20 °C, 65% rel. humidity) depending on subsurface/applied thickness
Coverage	approx. 750 g/m ² ; 2.46 oz/ft ² , depending on applied thickness
Storage	5 °C - 25 °C ; 41 °F - 77 °F, dry



* Information sur le niveau d'émission de substances volatiles dans l'air intérieur, présentant un risque de toxicité par inhalation, sur une échelle de classe allant de A+ (très faibles émissions) à C (fortes émissions)



AEROSANA® VISCONN FIBRE

Fibre-reinforced brush-on sealant with a humidity-variable sd value

APPLICATION: AEROSANA FLEECE is a supplementary product for working with spray-on or brush-on seals from the AEROSANA VISCONN family. It can be used to reliably cover cracks or joints that are wider than 3 mm in the case of AEROSANA VISCONN or 6 mm in the case of AEROSANA VISCONN FIBRE.

ID Code	GTIN	Item	Volume	Demand	UE	UE / Pal.	EUR / Liter	EUR / UE
1AR01677	4026639216779	Bucket	5 Liter	600 g/ m ²	1	44	11,90	59,50

ADVANTAGES:

Time-saving: Ready-to-use brush-on sealant; reliable structures thanks to excellent adhesive properties on all standard construction surfaces; covers cracks and joints of up to 20 mm width. Larger joints can also be covered in combination with AEROSANA FLEECE; can be plastered, painted and stuck over with all pro clima adhesive tapes; can be used flexibly both in interior and protected outdoor areas thanks to its humidity-variable sd value; excellent values in the hazardous substance test, has been tested according to the ISO 16000 evaluation

TECHNICAL SPECS:

Material	Aqueous acrylic dispersion, fibre-reinforced
s _d -value humidity variable	0,15 - 5,00 m
Water column	2.000 mm
Application temperature	5 °C to 35 °C ; 41 °F to 95 °F
Temperature resistance	permanent -40 °C to 90 °C ; -40 °F to 194 °F (dried)
Drying	approx. 6 - 48 hours (at 20 °C ; 68 °F, 65% rel. humidity) depending on subsurface and applied thickness
Coverage	400-800 g/m ² , depending on subsurface and applied thickness
Storage	5 °C - 25 °C ; 41 °F et 77 °F, dry in a closed airtight bucket

AEROSANA® FLEECE

Fleece within the AEROSANA VISCONN system for covering cracks or joints

APPLICATION: AEROSANA FLEECE is a supplementary product for working with spray-on or brush-on seals from the AEROSANA VISCONN family. It can be used to reliably cover cracks or joints that are wider than 3 mm in the case of AEROSANA VISCONN or 6 mm in the case of AEROSANA VISCONN FIBRE.

ID Code	GTIN	Length	Width	Coverage	UE	EUR / UE
1AR01715	4026639217158	25 m	15 cm	7,5 m ²	2	27,96

* Professional unit, only supplied in complete packages

ADVANTAGES:

Reliable airtightness and windtightness: Tested as part of the AEROSANA VISCONN system; easy to work with: Very malleable fleece material; excellent values in the hazardous substance test, has been tested according to the ISO 16000 evaluation

TECHNICAL SPECS:

Material	PET
Surface weight	63 ± 10 g/m ²
Thickness	0,7 ± 0,15 mm
Tensile strength MD/CD	90 ±15 N/5 cm / 145 ±15 N/5 cm
Elongation MD/CD	75 ±15% / 90 ± 15%

TESCON® FIX⁷

Mounting bracket rail for airtight bonding of the airtight layer to rafters, ties and ceiling beams

APPLICATION: The mounting bracket rail creates a defined surface for simple and reliable airtight bonding to angular and slightly rounded penetrations, e.g. for exterior use with the DASAPLANO system in the case of rafter penetrations on roof restoration projects.

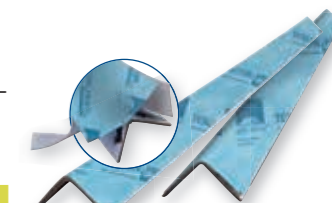
ID Code	GTIN	Length	Strip length	UE	UE / Pal.	EUR / Unit	EUR / UE
15436	4026639154361	1 m	3 cm	15	100	2.23	33.45
15437	4026639154378	1 m	3 cm	50	80	2.02	101.00

ADVANTAGES:

Creates a clean sticking surface for airtight bonding for angular and slightly rounded penetrations; simple to cut to length using a cutter, scissors or saw; defined joint allows for insulation with no hollows, e.g. on refurbishment projects; easy to attach to wooden structure using a stapler; reliable airtight bonding using waterproof SOLID adhesive

TECHNICAL SPECS:

Backing	special PP fleece
Adhesive	waterproof SOLID adhesive
Release film	silicone-coated PE film
Strip length	ca. 30 mm
Bracket rail	kraft board
Exposure time	adhesive tape: 6 months; bracket: install so that it is protected from weather
Application temperature	above -10 °C ; 14 °F
Temperature resistance	permanent -40 °C to +90 °C ; -40 °F to 194 °F



DASATOP® FIX

Mounting rail for secure positioning of a sub-and-top refurbishment vapour retarder on the ends of rafters

APPLICATION: The mounting rail simplifies the secure, tight-fitting installation of a sub-and-top refurbishment vapour retarder - e.g. pro clima DASATOP - to the ends of rafters.

ID Code	GTIN	Length	Width	Thickness	UE	UE / Pal.	EUR / Unit	EUR / UE
15435	4026639154354	1.00 m	40 mm	3 mm	50	100	0.78	39.00

ADVANTAGES:

Ensures tight-fitting installation of a sub-and-top refurbishment vapour retarder on the ends of rafters; Ideal addition to the pro clima DASATOP system; rail can be shortened by hand; easy to cut to desired length and to install; easy to attach to wooden structure using a stapler

TECHNICAL SPECS:

Material	MDF/ HDF fibreboard E1 / V20
Exposure time	4 weeks
Application temperature	above -10 °C ; 14 °F
Temperature resistance	permanent -40 °C to +90 °C ; -40 °F to 194 °F



WILLFIX®

Pipe feed-through with airtightness and windtightness flange for pressure-resistant external roof insulation

APPLICATION: For clean execution of permanently reliable, airtight and windtight pipe feed-throughs for external roof insulation with pressure-resistant insulation materials such as wood fibre, EPS or PUR.

ID Code	GTIN	Length	for pipe-Ø	UE	UE / Pal.	EUR / Unit	EUR / UE
16470	4026639164704	for 300 mm	110/125 mm	1	30	66.50	66.50
16471	4026639164711	for 300 mm	110/125 mm	10	12	59.98	599.80

ADVANTAGES:

Precise creation of openings - no uninsulated cavities in the insulation layer; simple, airtight joints to the vapour retarder and airtight layer; for pipes with Ø 100-120 mm (4"-4.75"); for insulation thicknesses of 80-300 mm (3.2"-11.8"); clean, safe and time-saving installation

TECHNICAL SPECS:

Material	PVC / PP
Insulation thickness	80 - 300 mm
Outer diameter	110 mm bzw. 125 mm
Inner diameter	125 mm
Temperature resistance	permanent -40 °C to +80 °C ; -40 °F to 176 °F



WILLFIX® tool set

APPLICATION: 8-piece professional tool set in a robust transport case made of impact-resistant plastic. For simple, professional installation of WILLFIX pipe feed-throughs for external roof insulation with pressure-resistant insulation materials such as wood fibre, EPS or PUR.

ID Code	GTIN	Width	Depth	Height	UE	EUR / UE
16472	4026639164728	54 cm	36 cm	41 cm	1	708.98

VOLUME:

- Core bit ø 170 mm, effective length ca. 300 mm
- Depth stop with cutting centring point
- 3 mm Allen key with T-handle
- 400 mm corkscrew
- Peeling tool with T-handle
- Core bit ø 133 mm with 300 mm extension
- Flat brush (no illustration)
- 7 mm socket wrench

500 ml bottle with brush

APPLICATION: Tool for quick and easy application of the WELDANO TURGA swelling welding agent.

ID Code	GTIN	Volume	Width	UE	EUR / UE
16440	4026639164407	500 ml	35 mm (Brush)	1	19.00

ADVANTAGES:

Quick and easy application of the WELDANO TURGA solvent welding agent; allows the technician to work with one hand; no contamination of the solvent welding agent in the container; volume of 500 ml

Roller ROLLFIX

APPLICATION: Practical tool for pressing evenly on the welding joint between two SOLITEX WELDANO Membranes.

ID Code	GTIN	Width	UE	EUR / UE
16439	4026639164391	40 mm (Roll)	1	36.90

ADVANTAGES:

Silicone Roller ensures a clean surface; good transfer of force thanks to ergonomic grip

Pressing aid for adhesive tapes PRESSFIX / PRESSFIX XL

APPLICATION: Practical tool for rubbing adhesive tapes into place evenly in a manner that is kinder to your hands.

Product	ID Code	GTIN	Length	Width	Thickness	UE	EUR / UE
PRESSFIX	11426	4026639114266	105 mm	80 mm	ca. 2 mm	10*	5,07
PRESSFIX XL	NEW 1AR01658	4026639216588	285 mm	130 mm	25 mm	1	2,72

*Only supplied in complete packages

CLOX Sealing plug for woodfibre boards which have boreholes for blown-in insulation

APPLICATION: The sealing plugs are designed to close bore holes on woodfibre boards after the installation of injected insulation. They are designed for boards no less than 35 mm thick and a bore hole of no more than 120 mm diameter.

Product	ID Code	GTIN	Durchmesser	Thickness	UE	UE / Pal.	EUR / Unit	EUR / UE
CLOX SLIM	15609	4026639156099	106.5 mm	40 mm	30	36	1.38	41.40
CLOX SLIM	15610	4026639156105	106.5 mm	40 mm	120	Prof. unit*	8	145.20
CLOX	14036	4026639140364	106.5 mm	60 mm	30	36	1.86	55.80
CLOX	14049	4026639140494	106.5 mm	60 mm	120	Prof. unit*	12	204.00
CLOX	14670	4026639146700	120 mm	60 mm	30	28	2.09	62.70
CLOX	14672	4026639146724	120 mm	60 mm	120	Prof. unit*	8	228.00

*Only supplied in complete packages

ADVANTAGES:

Simple and quick closure of bore holes in woodfibre boards; suitable for direct rendering of the recommended plaster system with the boards; simple to mount, no tools required; clean surface and professional look; Instant grip. No additional adhesive required

TECHNICAL SPECS:

Material	Wood fibre
Diameter	CLOX SLIM: 106.5 mm CLOX: 106.5 mm bzw. 120 mm
Thickness	CLOX SLIM: 40 mm / CLOX: 60 mm
s _g -Value	CLOX SLIM: 0.12 m / CLOX: 0.18 m
Design value of thermal conductivity: λ	0.046 W/m·K

GLUMEX Adhesive-removing solution

APPLICATION: Apply pro clima GLUMEX to the surface to be cleaned with a soft cloth and gently rub it in. After just a few minutes, the contaminant can be seen coming away from the surface. The contaminant can then be rubbed off using a rough material (e.g. steel wool or a brush). If any residues remain, this process can be repeated. It is recommended to test the compatibility of GLUMEX with the surface to be treated on a non-visible area of the surface.

ID Code	GTIN	Volume	UE	EUR / UE
10161	4026639017185	0.4 l	1	10.14

TENAPP Application tool for primer in 1 litre dispenser bottles

APPLICATION: Application tool for particularly quick and easy application of the solvent-free adhesive primer TESCON PRIMER RP in the 1 litre dispenser bottle.

ID Code	GTIN	UE	kg / UE	EUR / UE
12944	4026639129444	1	0.50	18.47

ADVANTAGES:

Quick and easy application of primers to softwood fibre, plaster, concrete and similar substrates; Application and dispersion of the primer in one step; enables single-handed work; no brush is required; no contamination of the primer in the container; includes 5 foam application rollers

TECHNICAL SPECS:

Material	stainless steel
Weight	ca. 300 g
Length	280 mm
Width	125 mm
Height	150 mm

600 F sealant gun

APPLICATION: For pro clima sausages. Robust aluminium cylinder, easy to clean

ID Code	GTIN	UE	EUR / UE
10154	4026639017239	1	33.84



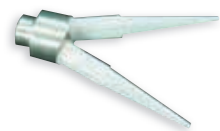
CLOX SLIM

CLOX



NEW





DKF double nozzle

APPLICATION: Double nozzle turned from high-quality aluminium. Solid design with aluminium thread. For applying two lines of adhesive on angled floor-wall joints with pro clima DA-S.

ID Code	GTIN	UE	EUR / UE
10153	4026639017260	1	17.49

SHELLY

APPLICATION: Mobile phone case for radiation protection. Protects you, the people around you and babies in the womb when telephone calls are being made. Available in black and red (for smartphones, BlackBerrys, iPhones etc.).

ID Code	GTIN	color	Dimensions	UE	EUR / UE
11491	4026639114914	black	XL: 16 cm x 8.5 cm	1	20.49
1AR00215	4026639202154	black	XXL: 17 cm x 9.5 cm	1	23.29
1AR00220	4026639202208	red	XXL: 17 cm x 9.5 cm	1	23.29

Discontinued product:
only while stocks last

RAPIDOLL Tape Dispenser

APPLICATION: For pro clima RAPID CELL (Roll 15 m in length). For quick execution of joint adhesion (e.g. wood-based panels). Roll out, press into place and tear off in a single working step.

ID Code	GTIN	UE	EUR / UE
10158	4026639017284	1	4.97

DUPLEX Tape Dispenser

APPLICATION: For quick application of pro clima DUPLEX (roll 20 m in length). Roll out, press into place and tear off in a single working step.

ID Code	GTIN	UE	EUR / UE
10157	4026639017277	1	4.97

KLIPFIX

APPLICATION: Makes it easy to close off a roll of joint-sealing tape that has already been started CONTEGA FIDEN EXO.

ID Code	GTIN	UE	EUR / UE
15651	4026639156518	1	7.09

ADVANTAGES: The partially used roll is kept closed; prevents the tape from bulging; saves on material and costs

WINCON test package

Consists of testing device, transport box, 2 rolls of WINCON adhesive tape, SMOKE BOTTLE.

ID Code	GTIN	UE	EUR / UE
10162	4026639018229	1	1645.65

TECHNICAL SPECS:

Fan in frame	810 x 810 mm
Power supply	230 V / 50 Hz / 4,35 A
Max. air flow rate	11.000 m ³ /h; 9.600 m ³ /h at 50 Pa
Accessories	Differential pressure display, rpm controller, 5 m mains power cable
Warranty	2 years



WINCON transport box

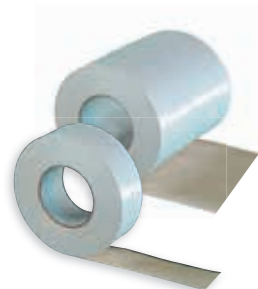
Robust and practical transport box for operation on building sites, with handles, lid can be removed.

ID Code	GTIN	UE	EUR / UE
10164	4026639018250	1	289.80

TECHNICAL SPECS:

Material	Plywood
Dimensions	H/86 x W/42 x D/85 cm





WINCON adhesive tape

Removable, for temporary sealing for WINCON testing.

ID Code	GTIN	Width	Length	UE	EUR / UE
10166	4026639018199	50 mm	50 m	1	9.52
1AR00947	4026639209474	200 mm	50 m	1	42.95

ADVANTAGES:

Can be removed after the test without leaving any residues; tear-resistant thanks to reinforcement; can withstand a test pressure of up to 100 Pa with a suitable subsurface and a sufficient roll area



SMOKE BOTTLE Fog generator for testing airtightness layers

APPLICATION: When the user presses lightly on the plastic bottle, a burst of fog is given off that makes air flows visible when testing airtightness layers using the vacuum procedure. The contents of one bottle are sufficient for around 150 - 250 test applications.

ID Code	GTIN	UE	EUR / UE
16533	4026639165336	1	18.58

ADVANTAGES:

Ready to use immediately; closed bottles can be stored for an unlimited period; cold fog, so no risk of holes in the airtightness layer; small, fits in trouser pocket; very economical

TECHNICAL SPECS:

Material Special mixture consisting of siloxanes

Information and ordering service

Information and ordering service

Pro clima's information service is the quickest way to access all information about systems, products, events and promotional campaigns. You can also request information material and samples here in an uncomplicated manner.

Information and ordering service

Tel.: +49 (0) 62 02 - 27 82.0

eMail: info@proclima.de

www.proclima.com

Engineering Hotline

Immediate answers relating to building physics, construction, systems or products. Our engineers in Timber Construction can help you quickly and simply in an expert manner and help you find solutions on cost-effective, reliable constructions that will lead to healthy living environments.

Engineering Hotline

Tel.: +49 (0) 62 02 - 27 82.45

eMail: technik@proclima.de

pro clima Workshops

Learn for the future with us in a practical, up-to-date, active and varied manner! The seminars, which build upon each other as part of a module system, are tailored for your individual requirements, existing knowledge, skills and aims.

Contact person

Jens-Lüder Herms

Tel.: +49 (0) 62 02 - 27 82.41

eMail: jens.lueder.herms@proclima.de



NEW

»pro clima WISSEN 2018/19« catalogue

The comprehensive guide to reliably sealing building envelopes. Planning manual with product and system information, studies on "Reliable solutions for energy-efficient refurbishment" and "Calculation of the degree of protection against structural damage", comprehensive design section, service.

Request a free copy now!



Tel.: + 49 (0) 62 02 - 27 82.0
info@proclima.de
proclima.de/wissen

MOLL

bauökologische Produkte GmbH · Rheintalstraße 35 - 43 · D-68723 Schwetzingen

Tel.: +49 (0) 62 02 - 27 82.0 · eMail: info@proclima.de · www.proclima.com

The applications and conditions described here are based on current state-of-the-art research and practical experience. We reserve the right to change the recommended structures and processing methods and to further develop and thus alter the quality of individual products. We would be glad to inform you about the current state of engineering knowledge at the time that you carry out installation.

Your pro clima partner

