

Installation steps



1. Clean the subsurface

Remove any sharp-edged or pointy objects (e.g. nails) that protrude from the decking. Brush off subsurfaces; if necessary, clean with a vacuum cleaner and wipe down.



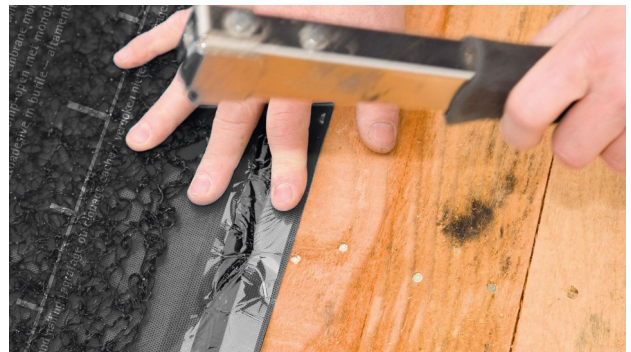
2. Roll out the membrane

Roll out and align the membrane parallel to the eave with the fibrous layer facing upwards. Install the membrane leaving an additional 4 cm (1 5/8") overlap at adjacent building components so that a windtight bond can be applied here subsequently.



3. Align

Align the membrane so that it is straight.



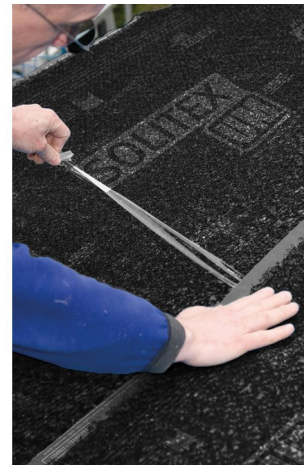
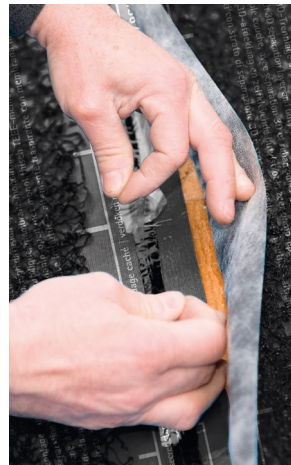
4. Fasten the membrane

Fasten the membrane using galvanised staples with a width of at least 10 mm (3/8") and a length of 8 mm (5/16") at intervals of 10-15 cm (4"-6") in the overlap area. To improve protection against the penetration of water during the construction phase, apply staples between the self-adhesive zones and the outer edge of the membrane.



5. Overlap the membranes

Roll out the second membrane, align it and affix it in a waterproof and overlapping manner. The 3D fibrous layer stops short of the overlap area, thus defining the width of the overlap.



6. Stick the overlap

Clean the subsurface (dry and free of dust, silicone and grease) and carry out an adhesion test, if necessary. Lift up the second membrane, remove the release film and gradually stick the membranes in place using the integrated self-adhesive strips, ensuring that there are no folds or tension. Rub the adhesive joint firmly.



7. Press down firmly

Rub the adhesive joint firmly.



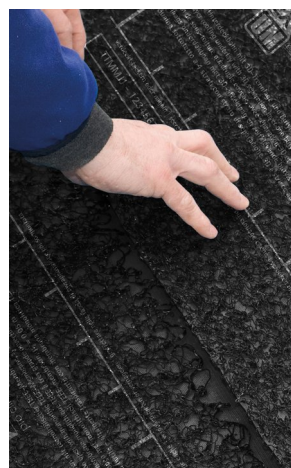
8a. End joint: Remove the fibrous layer

Remove a width of approx. 10 cm (4") of 3D fibrous layer from the lower membrane.



8b. End joint: Cut off the fibrous layer

Then cut off approx. 4-5 cm (1 5/8" - 2") of the fibrous layer. Install the lower membrane and staple it in place in the overlap area.



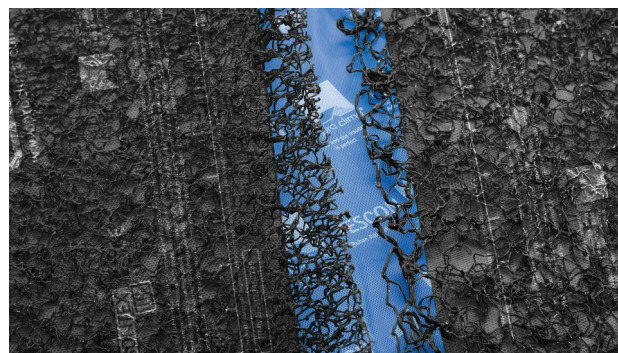
9. End joint: Align the membrane and fasten it in place

Remove 4-5 cm (1 5/8" - 2") of fibrous layer from the upper membrane. Align the upper membrane on the lower membrane, install in an overlapping manner and staple in place. The overlap width is determined by the area free of fibrous layer on the lower membrane (4-5 cm).



10. Stick the end joint

Lift up the loosened areas of the 3D fibrous layer and gradually stick the membranes using TESCON VANA system adhesive tape. Centre the adhesive tape and press down on it firmly.



11. Stick the end joint

This can be done in an efficient manner while applying a constant, high pressure by using the PRESSFIX application tool.



12. Sealing at eaves

Stick the membrane at the eave with DUPLEX double-sided adhesive tape or single-sided TESCON VANA system adhesive tape, ensuring that there are no folds or creases.



13. Install metal sheets

Once the membranes have been stuck to each other and to all adjacent building components, the metal sheet covering can then be installed. Roofing clips and other point-shaped penetrations can be sealed using TESCON NAIDECK nail sealing tape.

General conditions

Install the SOLITEX UM membrane with the fibrous layer side facing outwards. The membrane is to be installed horizontally (parallel to the eave) in a taut manner as an underlay membrane on even roof decking made of solid wood or wood-based panels.

Fasteners may not be applied in areas where water runs off in a collected manner (e.g. in roof valleys).

Ridge ventilation should be provided in the case of non-insulated attics that have not been converted. In addition, permanent ventilation fittings should be provided in the unconverted attic.

Additional measures (e.g. covering with tarpaulins) should be taken during the construction phase in the case of buildings that are lived in or buildings that are to be given particular protection. Covering with tarpaulins should also be considered if construction work is to be interrupted for a longer period. The specifications of the applicable national regulations are to be taken into account when carrying out installation and adhesion.

The information provided here is based on practical experience and the current state of knowledge. We reserve the right to make changes to the recommended designs and processing or to make alterations due to technical developments and associated improvements in the quality of our products. We would be happy to inform you of the current technical state of the art at the time you use our products.

Further information about the application and construction can be found in the pro clima planning documentation. For queries please call the pro clima technical hotline on +49 (0)6202 278245.

MOLL
bauökologische Produkte GmbH
Rheintalstraße 35 - 43
D-68723 Schwetzingen
Fon: +49 (0) 62 02 - 27 82.0
eMail: info@proclima.de